

## Product datasheet for **TA335221**

### ROM1 Rabbit Polyclonal Antibody

#### Product data:

Product Type:	Primary Antibodies
Applications:	WB
Recommended Dilution:	WB
Reactivity:	Human
Host:	Rabbit
Isotype:	IgG
Clonality:	Polyclonal
Immunogen:	The immunogen for anti-ROM1 antibody: synthetic peptide directed towards the middle region of human ROM1. Synthetic peptide located within the following region: NPHSPRPCLQNRLSDSYAHPLFDPRQPQNQLWAQGCHEVLLEHLQDLAGT
Formulation:	Liquid. Purified antibody supplied in 1x PBS buffer with 0.09% (w/v) sodium azide and 2% sucrose. <i>Note that this product is shipped as lyophilized powder to China customers.</i>
Purification:	Affinity Purified
Conjugation:	Unconjugated
Storage:	Store at -20°C as received.
Stability:	Stable for 12 months from date of receipt.
Predicted Protein Size:	37 kDa
Gene Name:	retinal outer segment membrane protein 1
Database Link:	<a href="#">NP_000318</a> <a href="#">Entrez Gene 6094 Human</a> <a href="#">Q03395</a>



[View online »](#)

**Background:**

ROM1 is an integral membrane protein found in the photoreceptor disk rim of the eye. It can form homodimers or can heterodimerize with another photoreceptor, retinal degeneration slow (RDS). It is essential for disk morphogenesis, and may also function as an adhesion molecule involved in the stabilization and compaction of outer segment disks or in the maintenance of the curvature of the rim. Certain defects in this gene have been associated with the degenerative eye disease retinitis pigmentosa. This gene is a member of a photoreceptor-specific gene family and encodes an integral membrane protein found in the photoreceptor disk rim of the eye. This protein can form homodimers or can heterodimerize with another photoreceptor, retinal degeneration slow (RDS). It is essential for disk morphogenesis, and may also function as an adhesion molecule involved in the stabilization and compaction of outer segment disks or in the maintenance of the curvature of the rim. Certain defects in this gene have been associated with the degenerative eye disease retinitis pigmentosa. Publication Note: This RefSeq record includes a subset of the publications that are available for this gene. Please see the Entrez Gene record to access additional publications.

**Synonyms:**

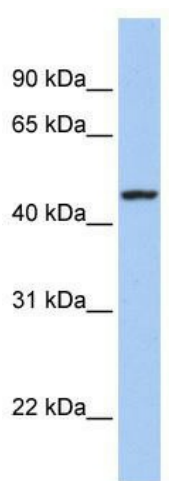
ROM; ROSP1; RP7; TSPAN23

**Note:**

Immunogen Sequence Homology: Human: 100%; Pig: 93%; Rat: 93%; Mouse: 93%; Rabbit: 93%; Guinea pig: 93%; Dog: 92%; Horse: 92%; Bovine: 92%

**Protein Families:**

Druggable Genome, Transmembrane

**Product images:**


WB Suggested Anti-ROM1 Antibody Titration: 0.2-1 ug/ml; Positive Control: Transfected 293T