

## Product datasheet for **TA335218**

### TFIIF (GTF2F1) Rabbit Polyclonal Antibody

#### Product data:

Product Type:	Primary Antibodies
Applications:	WB
Recommended Dilution:	WB
Reactivity:	Human
Host:	Rabbit
Isotype:	IgG
Clonality:	Polyclonal
Immunogen:	The immunogen for anti-GTF2F1 antibody: synthetic peptide directed towards the N terminal of human GTF2F1. Synthetic peptide located within the following region: DKVNFATWNQARLERDLSNKKIYQEEEMPESGAGSEFNRLREEARRKKY
Formulation:	Liquid. Purified antibody supplied in 1x PBS buffer with 0.09% (w/v) sodium azide and 2% sucrose. <i>Note that this product is shipped as lyophilized powder to China customers.</i>
Purification:	Affinity Purified
Conjugation:	Unconjugated
Storage:	Store at -20°C as received.
Stability:	Stable for 12 months from date of receipt.
Predicted Protein Size:	58 kDa
Gene Name:	general transcription factor IIF subunit 1
Database Link:	<a href="#">NP_002087</a> <a href="#">Entrez Gene 2962 Human P35269</a>
Background:	GTF2F1 is a general transcription initiation factor that binds to RNA polymerase II and helps to recruit it to the initiation complex in collaboration with TFIIB. It promotes transcription elongation.
Synonyms:	BTF4; RAP74; TF2F1; TFIIF
Note:	Immunogen Sequence Homology: Dog: 100%; Pig: 100%; Rat: 100%; Horse: 100%; Human: 100%; Mouse: 100%; Bovine: 100%; Rabbit: 100%; Guinea pig: 100%; Yeast: 90%

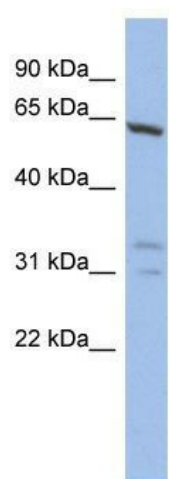


[View online »](#)

Protein Families: Druggable Genome, Transcription Factors

Protein Pathways: Basal transcription factors

### Product images:



WB Suggested Anti-GTF2F1 Antibody Titration:  
0.2-1 ug/ml; ELISA Titer: 1: 12500; Positive  
Control: HT1080 cell lysate GTF2F1 is strongly  
supported by BioGPS gene expression data to be  
expressed in Human HT1080 cells