

## Product datasheet for **TA335217**

### TFIIE beta (GTF2E2) Rabbit Polyclonal Antibody

#### Product data:

Product Type:	Primary Antibodies
Applications:	WB
Recommended Dilution:	WB
Reactivity:	Human
Host:	Rabbit
Isotype:	IgG
Clonality:	Polyclonal
Immunogen:	The immunogen for anti-GTF2E2 antibody: synthetic peptide directed towards the middle region of human GTF2E2. Synthetic peptide located within the following region: ISSMQESGPKKVAPIQRRKKPASQKKRRFKTHNEHLAGVLDYSDITSSK
Formulation:	Liquid. Purified antibody supplied in 1x PBS buffer with 0.09% (w/v) sodium azide and 2% sucrose. <i>Note that this product is shipped as lyophilized powder to China customers.</i>
Purification:	Affinity Purified
Conjugation:	Unconjugated
Storage:	Store at -20°C as received.
Stability:	Stable for 12 months from date of receipt.
Predicted Protein Size:	33 kDa
Gene Name:	general transcription factor IIE subunit 2
Database Link:	<a href="#">NP_002086</a> <a href="#">Entrez Gene 2961 Human</a> <a href="#">P29084</a>
Background:	GTF2E2 belongs to the TFIIE beta subunit family. It recruits TFIIF to the initiation complex and stimulates the RNA polymerase II C-terminal domain kinase and DNA-dependent ATPase activities of TFIIF. Both TFIIF and TFIIE are required for promoter clearance by RNA polymerase.
Synonyms:	FE; TF2E2; TFIIE-B



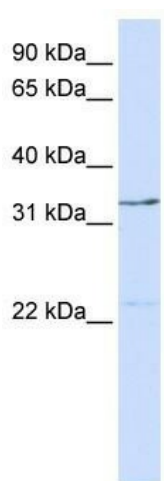
[View online »](#)

**Note:** Immunogen Sequence Homology: Dog: 100%; Pig: 100%; Rat: 100%; Goat: 100%; Horse: 100%; Human: 100%; Mouse: 100%; Bovine: 100%; Rabbit: 100%; Guinea pig: 100%

**Protein Families:** Transcription Factors

**Protein Pathways:** Basal transcription factors

**Product images:**



WB Suggested Anti-GTF2E2 Antibody Titration:  
0.2-1 ug/ml; ELISA Titer: 1: 312500; Positive  
Control: 293T cell lysate