

Product datasheet for **TA335216**

TFIIE beta (GTF2E2) Rabbit Polyclonal Antibody

Product data:

Product Type:	Primary Antibodies
Applications:	WB
Recommended Dilution:	WB
Reactivity:	Human
Host:	Rabbit
Isotype:	IgG
Clonality:	Polyclonal
Immunogen:	The immunogen for anti-GTF2E2 antibody: synthetic peptide directed towards the N terminal of human GTF2E2. Synthetic peptide located within the following region: MDPSLLRERELFKKRALSTPVVEKRSASSESSSSSSSKKKTKVEHGGSSG
Formulation:	Liquid. Purified antibody supplied in 1x PBS buffer with 0.09% (w/v) sodium azide and 2% sucrose. <i>Note that this product is shipped as lyophilized powder to China customers.</i>
Purification:	Affinity Purified
Conjugation:	Unconjugated
Storage:	Store at -20°C as received.
Stability:	Stable for 12 months from date of receipt.
Predicted Protein Size:	33 kDa
Gene Name:	general transcription factor IIE subunit 2
Database Link:	NP_002086 Entrez Gene 2961 Human P29084
Background:	GTF2E2 recruits TFIH to the initiation complex and stimulates the RNA polymerase II C-terminal domain kinase and DNA-dependent ATPase activities of TFIH. Both TFIH and TFIIE are required for promoter clearance by RNA polymerase.
Synonyms:	FE; TF2E2; TFIIE-B
Note:	Immunogen Sequence Homology: Human: 100%; Dog: 93%; Horse: 93%; Rat: 86%; Goat: 86%; Bovine: 86%; Pig: 79%; Guinea pig: 79%; Mouse: 77%

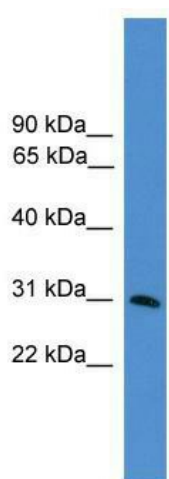


[View online »](#)

Protein Families: Transcription Factors

Protein Pathways: Basal transcription factors

Product images:



WB Suggested Anti-GTF2E2 Antibody Titration:
0.2-1 ug/ml; ELISA Titer: 1: 62500; Positive
Control: HepG2 cell lysate