

Product datasheet for **TA335212**

EGR4 Rabbit Polyclonal Antibody

Product data:

Product Type:	Primary Antibodies
Applications:	WB
Recommended Dilution:	WB
Reactivity:	Human
Host:	Rabbit
Isotype:	IgG
Clonality:	Polyclonal
Immunogen:	The immunogen for anti-EGR4 antibody: synthetic peptide directed towards the C terminal of human EGR4. Synthetic peptide located within the following region: RSDHLLTSHVRTHTGKPFACDVCGRRFARSDEKRRHRSKVHLKQKARAEER
Formulation:	Liquid. Purified antibody supplied in 1x PBS buffer with 0.09% (w/v) sodium azide and 2% sucrose. <i>Note that this product is shipped as lyophilized powder to China customers.</i>
Purification:	Affinity Purified
Conjugation:	Unconjugated
Storage:	Store at -20°C as received.
Stability:	Stable for 12 months from date of receipt.
Predicted Protein Size:	51 kDa
Gene Name:	early growth response 4
Database Link:	NP_001956 Entrez Gene 1961 Human Q05215



[View online »](#)

Background:

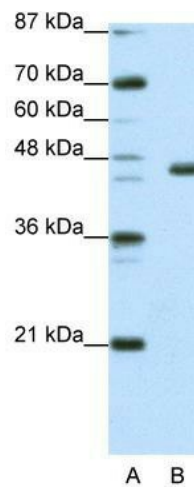
The nerve growth factor-induced clone C (NGFI-C/EGR4) gene is a zinc-finger transcription factor that is rapidly induced by nerve growth factor in rat pheochromocytoma PC12 cells and by seizure in brain. NGFI-C/EGR4 is closely related to the previously described early response genes, nerve growth factor-induced clone A (NGFI-A or EGR1), EGR2, and EGR3. These four early response (immediate early) proteins all contain very similar zinc-finger DNA binding domains and five highly homologous subdomains. EGR-4 functionally cooperate with NFAT proteins and induce expression of IL-2 and TNFalpha. Early growth response proteins (EGR) and nuclear factors of activated T cells (NFAT) form heterodimers and regulate proinflammatory cytokine gene expression.

Synonyms:

NGFI-C; NGFIC; PAT133

Note:

Immunogen Sequence Homology: Dog: 100%; Pig: 100%; Rat: 100%; Horse: 100%; Human: 100%; Mouse: 100%; Bovine: 100%; Rabbit: 100%; Guinea pig: 100%; Zebrafish: 91%

Product images:

WB Suggested Anti-EGR4 Antibody Titration:
0.0625 ug/ml; ELISA Titer: 1: 312500; Positive
Control: Jurkat cell lysate