

Product datasheet for **TA335206**

CDX1 Rabbit Polyclonal Antibody

Product data:

Product Type:	Primary Antibodies
Applications:	WB
Recommended Dilution:	WB
Reactivity:	Human
Host:	Rabbit
Isotype:	IgG
Clonality:	Polyclonal
Immunogen:	The immunogen for anti-CDX1 antibody: synthetic peptide directed towards the N terminal of human CDX1. Synthetic peptide located within the following region: GPPAPPPAPPQYPDFSSYSHVEPAPAPPTAWGAPFPAPKDDWAAAYGPGP
Formulation:	Liquid. Purified antibody supplied in 1x PBS buffer with 0.09% (w/v) sodium azide and 2% sucrose. <i>Note that this product is shipped as lyophilized powder to China customers.</i>
Purification:	Affinity Purified
Conjugation:	Unconjugated
Storage:	Store at -20°C as received.
Stability:	Stable for 12 months from date of receipt.
Predicted Protein Size:	28 kDa
Gene Name:	caudal type homeobox 1
Database Link:	NP_001795 Entrez Gene 1044 Human P47902
Background:	This gene is a member of the caudal-related homeobox transcription factor gene family. The encoded DNA-binding protein regulates intestine-specific gene expression and enterocyte differentiation. It has been shown to induce expression of the intestinal alkaline phosphatase gene, and inhibit beta-catenin/T-cell factor transcriptional activity.
Synonyms:	MGC116915

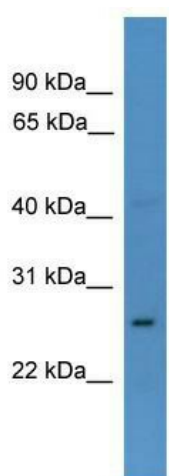


[View online »](#)

Note: Immunogen Sequence Homology: Human: 100%; Bovine: 86%; Rabbit: 85%; Dog: 79%; Pig: 79%; Mouse: 79%; Zebrafish: 77%

Protein Families: Transcription Factors

Product images:



WB Suggested Anti-CDX1 Antibody Titration: 0.2-1 ug/ml; ELISA Titer: 1: 62500; Positive Control: OVCAR-3 cell lysate