

## Product datasheet for **TA335205**

### BRDT Rabbit Polyclonal Antibody

#### Product data:

Product Type:	Primary Antibodies
Applications:	IHC
Recommended Dilution:	IHC
Reactivity:	Human
Host:	Rabbit
Isotype:	IgG
Clonality:	Polyclonal
Immunogen:	The immunogen for anti-BRDT antibody: synthetic peptide directed towards the N terminal of human BRDT. Synthetic peptide located within the following region: MSLPSRQTAIVNPPPEYINTKKNGLTNQLQYLQKVVLKDLWKHSFSW
Formulation:	Liquid. Purified antibody supplied in 1x PBS buffer with 0.09% (w/v) sodium azide and 2% sucrose. <i>Note that this product is shipped as lyophilized powder to China customers.</i>
Purification:	Affinity Purified
Conjugation:	Unconjugated
Storage:	Store at -20°C as received.
Stability:	Stable for 12 months from date of receipt.
Predicted Protein Size:	108 kDa
Gene Name:	bromodomain testis associated
Database Link:	<a href="#">NP_001717</a> <a href="#">Entrez Gene 676 Human</a> <a href="#">Q58F21</a>
Background:	BRDT is similar to the RING3 protein family. It possesses 2 bromodomain motifs and a PEST sequence (a cluster of proline, glutamic acid, serine, and threonine residues), characteristic of proteins that undergo rapid intracellular degradation. The bromodomain is found in proteins that regulate transcription. Two transcript variants encoding the same protein have been found for this gene.
Synonyms:	BRD6; CT9

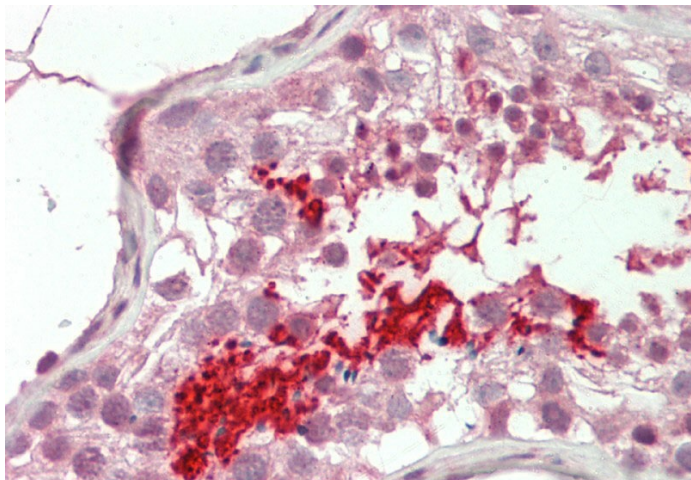


[View online »](#)

**Note:** Immunogen Sequence Homology: Pig: 100%; Rat: 100%; Human: 100%; Bovine: 100%; Guinea pig: 100%; Dog: 93%; Mouse: 93%; Rabbit: 93%; Horse: 86%

**Protein Families:** Protein Kinase, Transcription Factors

**Product images:**



Rabbit Anti-BRDT antibody. Formalin Fixed Paraffin Embedded Tissue: Human Testis. Primary antibody Concentration: 1:100. Secondary Antibody: Donkey anti-Rabbit-Cy3. Secondary Antibody Concentration: 1:200. Magnification: 20x. Exposure Time: 0.5-2.0sec.