

## Product datasheet for **TA335204**

### ATF 4 (ATF4) Rabbit Polyclonal Antibody

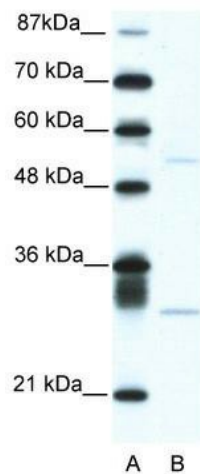
#### Product data:

Product Type:	Primary Antibodies
Applications:	WB
Recommended Dilution:	WB
Reactivity:	Human
Host:	Rabbit
Isotype:	IgG
Clonality:	Polyclonal
Immunogen:	The immunogen for anti-ATF4 antibody: synthetic peptide directed towards the C terminal of human ATF4. Synthetic peptide located within the following region: EQNKTAATRYRQKKRAEQEALTGECKELEKKNEALKERADSLAKEIQYLK
Formulation:	Liquid. Purified antibody supplied in 1x PBS buffer with 0.09% (w/v) sodium azide and 2% sucrose. <i>Note that this product is shipped as lyophilized powder to China customers.</i>
Purification:	Protein A purified
Conjugation:	Unconjugated
Storage:	Store at -20°C as received.
Stability:	Stable for 12 months from date of receipt.
Predicted Protein Size:	39 kDa
Gene Name:	activating transcription factor 4
Database Link:	<a href="#">NP_001666</a> <a href="#">Entrez Gene 468 Human</a> <a href="#">P18848</a>



[View online »](#)

<b>Background:</b>	ATF4s a transcription factor that was originally identified as a widely expressed mammalian DNA binding protein that could bind a tax-responsive enhancer element in the LTR of HTLV-1. The encoded protein was also isolated and characterized as the cAMP-response element binding protein 2 (CREB-2). The protein encoded by this gene belongs to a family of DNA-binding proteins that includes the AP-1 family of transcription factors, cAMP-response element binding proteins (CREBs) and CREB-like proteins. These transcription factors share a leucine zipper region that is involved in protein-protein interactions, located C-terminal to a stretch of basic amino acids that functions as a DNA binding domain. Two alternative transcripts encoding the same protein have been described. Two pseudogenes are located on the X chromosome at q28 in a region containing a large inverted duplication.
<b>Synonyms:</b>	CREB-2; CREB2; TAXREB67; TXREB
<b>Note:</b>	Immunogen Sequence Homology: Dog: 100%; Human: 100%; Pig: 93%; Rat: 93%; Horse: 93%; Mouse: 93%; Sheep: 93%; Bovine: 93%; Guinea pig: 93%; Yeast: 82%
<b>Protein Families:</b>	Transcription Factors
<b>Protein Pathways:</b>	GnRH signaling pathway, Long-term potentiation, MAPK signaling pathway, Neurotrophin signaling pathway, Prostate cancer

**Product images:**

WB Suggested Anti-ATF4 Antibody Titration: 5.0 ug/ml; ELISA Titer: 1: 62500; Positive Control: Jurkat cell lysate ATF4 is supported by BioGPS gene expression data to be expressed in Jurkat