

Product datasheet for **TA335203**

TRIM23 Rabbit Polyclonal Antibody

Product data:

Product Type:	Primary Antibodies
Applications:	WB
Recommended Dilution:	WB
Reactivity:	Human
Host:	Rabbit
Isotype:	IgG
Clonality:	Polyclonal
Immunogen:	The immunogen for anti-TRIM23 antibody: synthetic peptide directed towards the C terminal of human TRIM23. Synthetic peptide located within the following region: RISEAHSELAKLLTEKELRDALLIFANKQDVAGALSVEEITELLSLHKL
Formulation:	Liquid. Purified antibody supplied in 1x PBS buffer with 0.09% (w/v) sodium azide and 2% sucrose. <i>Note that this product is shipped as lyophilized powder to China customers.</i>
Purification:	Protein A purified
Conjugation:	Unconjugated
Storage:	Store at -20°C as received.
Stability:	Stable for 12 months from date of receipt.
Predicted Protein Size:	61 kDa
Gene Name:	tripartite motif containing 23
Database Link:	NP_150231 Entrez Gene 373 Human P36406



[View online »](#)

Background:

TRIM23 is a member of the tripartite motif (TRIM) family. The TRIM motif includes three zinc-binding domains, a RING, a B-box type 1 and a B-box type 2, and a coiled-coil region. This protein is also a member of the ADP ribosylation factor family of guanine nucleotide-binding family of proteins. Its carboxy terminus contains an ADP-ribosylation factor domain and a guanine nucleotide binding site, while the amino terminus contains a GTPase activating protein domain which acts on the guanine nucleotide binding site. The protein localizes to lysosomes and the Golgi apparatus. It plays a role in the formation of intracellular transport vesicles, their movement from one compartment to another, and phospholipase D activation. Three alternatively spliced transcript variants for this gene have been described.

Synonyms:

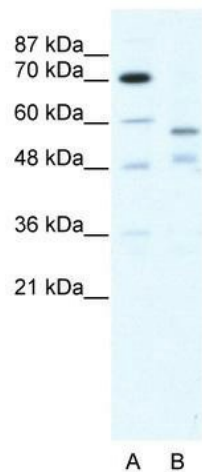
ARD1; ARFD1; RNF46

Note:

Immunogen Sequence Homology: Dog: 100%; Pig: 100%; Rat: 100%; Horse: 100%; Human: 100%; Mouse: 100%; Rabbit: 100%; Guinea pig: 100%; Bovine: 93%; Yeast: 91%; Zebrafish: 86%

Protein Families:

Druggable Genome

Product images:

WB Suggested Anti-TRIM23 Antibody Titration: 5.0 ug/ml; ELISA Titer: 1: 62500; Positive Control: HepG2 cell lysate