

## Product datasheet for **TA335202**

### **PAX6 Rabbit Polyclonal Antibody**

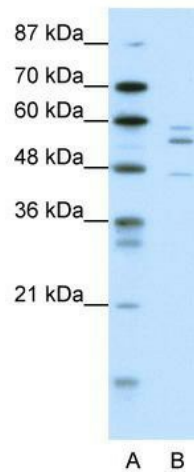
#### **Product data:**

Product Type:	Primary Antibodies
Applications:	WB
Recommended Dilution:	WB
Reactivity:	Human, Mouse
Host:	Rabbit
Isotype:	IgG
Clonality:	Polyclonal
Immunogen:	The immunogen for anti-PAX6 antibody: synthetic peptide directed towards the N terminal of human PAX6. Synthetic peptide located within the following region: LAHSGARPCDISRILQTHADAKVQLDNQNVSNVCVSKILGRYYETGSIR
Formulation:	Liquid. Purified antibody supplied in 1x PBS buffer with 0.09% (w/v) sodium azide and 2% sucrose. <i>Note that this product is shipped as lyophilized powder to China customers.</i>
Purification:	Affinity Purified
Conjugation:	Unconjugated
Storage:	Store at -20°C as received.
Stability:	Stable for 12 months from date of receipt.
Predicted Protein Size:	48 kDa
Gene Name:	paired box 6
Database Link:	<a href="#">NP_001595</a> <a href="#">Entrez Gene 18508 Mouse</a> <a href="#">Entrez Gene 5080 Human</a> <a href="#">P26367</a>



[View online »](#)

- Background:** This gene encodes paired box gene 6, one of many human homologs of the *Drosophila melanogaster* gene *prd*. In addition to the hallmark feature of this gene family, a conserved paired box domain, the encoded protein also contains a homeo box domain. Both domains are known to bind DNA and function as regulators of gene transcription. This gene is expressed in the developing nervous system, and in developing eyes. Mutations in this gene are known to cause ocular disorders such as aniridia and Peter's anomaly. Alternatively spliced transcript variants encoding multiple isoforms have been observed for this gene. [provided by RefSeq, May 2012]
- Synonyms:** AN; AN2; D11S812E; FVH1; MGDA; WAGR
- Note:** Immunogen Sequence Homology: Dog: 100%; Pig: 100%; Rat: 100%; Horse: 100%; Human: 100%; Bovine: 100%; Rabbit: 100%; Mouse: 93%; Zebrafish: 93%; Guinea pig: 93%
- Protein Families:** Adult stem cells, Druggable Genome, Embryonic stem cells, Transcription Factors
- Protein Pathways:** Maturity onset diabetes of the young
- Product images:**



WB Suggested Anti-PAX6 Antibody Titration:  
0.0625 ug/ml; ELISA Titer: 1: 12500; Positive  
Control: HepG2 cell lysate