

Product datasheet for **TA335201**

ID4 Rabbit Polyclonal Antibody

Product data:

Product Type:	Primary Antibodies
Applications:	WB
Recommended Dilution:	WB
Reactivity:	Human
Host:	Rabbit
Isotype:	IgG
Clonality:	Polyclonal
Immunogen:	The immunogen for anti-ID4 antibody: synthetic peptide directed towards the N terminal of human ID4. Synthetic peptide located within the following region: MKAVSPVRPSGRKAPSGCGGGELALRCLAEHGHS LGGSAAAAAAAAAARC
Formulation:	Liquid. Purified antibody supplied in 1x PBS buffer with 0.09% (w/v) sodium azide and 2% sucrose. <i>Note that this product is shipped as lyophilized powder to China customers.</i>
Purification:	Protein A purified
Conjugation:	Unconjugated
Storage:	Store at -20°C as received.
Stability:	Stable for 12 months from date of receipt.
Predicted Protein Size:	17 kDa
Gene Name:	inhibitor of DNA binding 4, HLH protein
Database Link:	NP_001537 Entrez Gene 3400 Human P47928



[View online »](#)

Background: Transcription factors containing a basic helix-loop-helix (bHLH) motif regulate expression of tissue-specific genes in a number of mammalian and insect systems. DNA-binding activity of the bHLH proteins is dependent on formation of homo- and/or heterodimers. Dominant-negative HLH proteins encoded by Id-related genes, such as ID4, also contain the HLH-dimerization domain but lack the DNA-binding basic domain. Consequently, Id proteins inhibit binding to DNA and transcriptional transactivation by heterodimerization with bHLH proteins (Pagliuca et al., 1995). [supplied by OMIM]

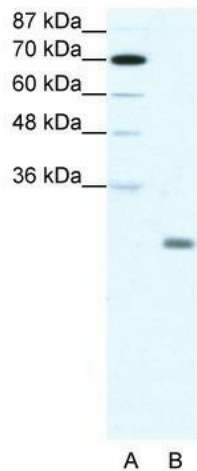
Synonyms: bHLHb27; IDB4

Note: Immunogen Sequence Homology: Dog: 100%; Pig: 100%; Rat: 100%; Human: 100%; Mouse: 100%; Zebrafish: 85%

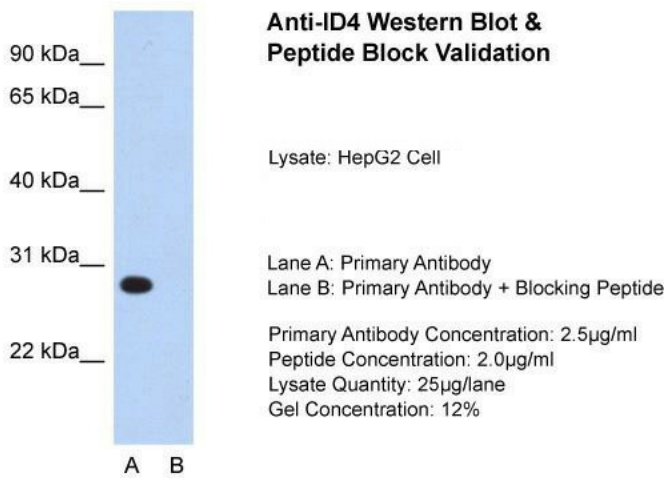
Protein Families: ES Cell Differentiation/IPS, Transcription Factors

Protein Pathways: TGF-beta signaling pathway

Product images:



WB Suggested Anti-ID4 Antibody Titration: 1.25 ug/ml; ELISA Titer: 1: 1562500; Positive Control: HepG2 cell lysate



Host: Rabbit; Target Name: ID4; Sample Tissue: HepG2; Lane A: Primary Antibody; Lane B: Primary Antibody + Blocking Peptide; Primary Antibody Concentration: 2.5 ug/mL; Peptide Concentration: 2.0 ug/mL; Lysate Quantity: 25 ug/lane; Gel Concentration: 12%