

## Product datasheet for **TA335199**

### GTF2H4 Rabbit Polyclonal Antibody

#### Product data:

Product Type:	Primary Antibodies
Applications:	WB
Recommended Dilution:	WB
Reactivity:	Human
Host:	Rabbit
Isotype:	IgG
Clonality:	Polyclonal
Immunogen:	The immunogen for anti-GTF2H4 antibody: synthetic peptide directed towards the C terminal of human GTF2H4. Synthetic peptide located within the following region: LSQVDFELLAHARELGVLVFENSAKRLMVVTPAGHSDVKRFWKRQKHSS
Formulation:	Liquid. Purified antibody supplied in 1x PBS buffer with 0.09% (w/v) sodium azide and 2% sucrose. <i>Note that this product is shipped as lyophilized powder to China customers.</i>
Purification:	Protein A purified
Conjugation:	Unconjugated
Storage:	Store at -20°C as received.
Stability:	Stable for 12 months from date of receipt.
Predicted Protein Size:	52 kDa
Gene Name:	general transcription factor IIH subunit 4
Database Link:	<a href="#">NP_001508</a> <a href="#">Entrez Gene 2968 Human</a> <a href="#">Q92759</a>
Background:	GTF2H4 belongs to the TFB2 family. It is a component of the core-TFIIF basal transcription factor involved in nucleotide excision repair (NER) of DNA and, when complexed to CAK, in RNA transcription by RNA polymerase II.
Synonyms:	P52; TFB2; TFIIF
Note:	Immunogen Sequence Homology: Dog: 100%; Pig: 100%; Rat: 100%; Goat: 100%; Human: 100%; Mouse: 100%; Bovine: 100%; Rabbit: 100%; Guinea pig: 100%; Zebrafish: 87%

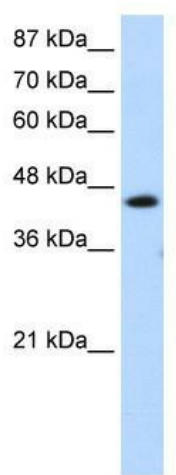


[View online »](#)

Protein Families: Druggable Genome, Transcription Factors

Protein Pathways: Basal transcription factors, Nucleotide excision repair

### Product images:



WB Suggested Anti-GTF2H4 Antibody Titration:  
1.25 ug/ml; Positive Control: Jurkat cell lysate