

Product datasheet for **TA335195**

BLOC1S1 Rabbit Polyclonal Antibody

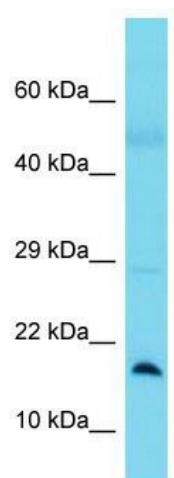
Product data:

Product Type:	Primary Antibodies
Applications:	WB
Recommended Dilution:	WB
Reactivity:	Human
Host:	Rabbit
Isotype:	IgG
Clonality:	Polyclonal
Immunogen:	The immunogen for anti-BLOC1S1 antibody is: synthetic peptide directed towards the N-terminal region of Human BLOC1S1. Synthetic peptide located within the following region: SPQPDVMTLSRLLKEHQAKQNERKELQEKRRREAITAATCLTEALVDHLN
Formulation:	Liquid. Purified antibody supplied in 1x PBS buffer with 0.09% (w/v) sodium azide and 2% sucrose. <i>Note that this product is shipped as lyophilized powder to China customers.</i>
Purification:	Affinity Purified
Conjugation:	Unconjugated
Storage:	Store at -20°C as received.
Stability:	Stable for 12 months from date of receipt.
Predicted Protein Size:	16 kDa
Gene Name:	biogenesis of lysosomal organelles complex 1 subunit 1
Database Link:	NP_001478 Entrez Gene 2647 Human P78537
Background:	BLOC1S1 is a component of the ubiquitously expressed BLOC1 multisubunit protein complex. BLOC1 is required for normal biogenesis of specialized organelles of the endosomal-lysosomal system, such as melanosomes and platelet dense granules.
Synonyms:	BLOS1; GCN5L1; MICoA; RT14
Note:	Immunogen Sequence Homology: Dog: 100%; Pig: 100%; Rat: 100%; Horse: 100%; Human: 100%; Mouse: 100%; Bovine: 100%; Rabbit: 100%; Guinea pig: 100%; Zebrafish: 93%



[View online »](#)

Product images:



Host: Rabbit; Target Name: BLOC1S1; Sample
Tissue: Lung Tumor lysates; Antibody Dilution: 1.0
ug/ml