

Product datasheet for **TA335192**

FOXC1 Rabbit Polyclonal Antibody

Product data:

Product Type:	Primary Antibodies
Applications:	IHC, WB
Recommended Dilution:	WB, IHC
Reactivity:	Human
Host:	Rabbit
Isotype:	IgG
Clonality:	Polyclonal
Immunogen:	The immunogen for anti-FOXC1 antibody: synthetic peptide directed towards the N terminal of human FOXC1. Synthetic peptide located within the following region: GGYTAMPAPMSVYSHPAHAEQYPPGGMARAYGPYTPQPQPKDMVKPPYSYI
Formulation:	Liquid. Purified antibody supplied in 1x PBS buffer with 0.09% (w/v) sodium azide and 2% sucrose. <i>Note that this product is shipped as lyophilized powder to China customers.</i>
Purification:	Affinity Purified
Conjugation:	Unconjugated
Storage:	Store at -20°C as received.
Stability:	Stable for 12 months from date of receipt.
Predicted Protein Size:	57 kDa
Gene Name:	forkhead box C1
Database Link:	NP_001444 Entrez Gene 2296 Human Q12948

Background: This gene belongs to the forkhead family of transcription factors which is characterized by a distinct DNA-binding forkhead domain. The specific function of this gene has not yet been determined; however, it has been shown to play a role in the regulation of embryonic and ocular development. Mutations in this gene cause various glaucoma phenotypes including primary congenital glaucoma, autosomal dominant iridogoniodysgenesis anomaly, and Axenfeld-Rieger anomaly. [provided by RefSeq, Jul 2008]



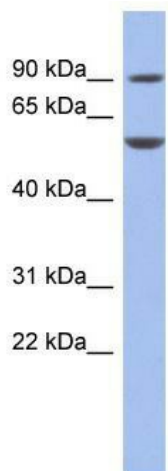
[View online »](#)

Synonyms: ARA; FKHL7; FREAC-3; FREAC3; IGDA; IHG1; IRID1; RIEG3

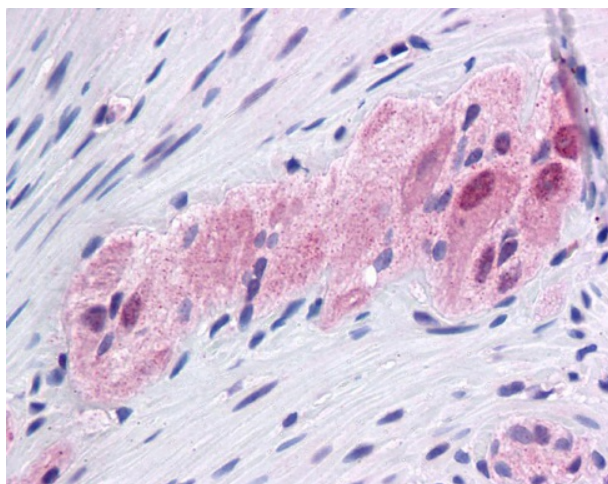
Note: Immunogen Sequence Homology: Rat: 100%; Human: 100%; Mouse: 93%; Zebrafish: 79%

Protein Families: Druggable Genome, Transcription Factors

Product images:



WB Suggested Anti-FOXC1 Antibody Titration: 0.2-1 ug/ml; ELISA Titer: 1: 62500; Positive Control: THP-1 cell lysate



Colon, myenteric plexus