

## Product datasheet for **TA335189**

### ELF4 Rabbit Polyclonal Antibody

#### Product data:

Product Type:	Primary Antibodies
Applications:	WB
Recommended Dilution:	WB
Reactivity:	Human
Host:	Rabbit
Isotype:	IgG
Clonality:	Polyclonal
Immunogen:	The immunogen for anti-ELF4 antibody: synthetic peptide directed towards the N terminal of human ELF4. Synthetic peptide located within the following region: MAITLQPSDLIFEFASNGMDDDIHQLEDPSVFPVAVEQVPYPDLLHLYS
Formulation:	Liquid. Purified antibody supplied in 1x PBS buffer with 0.09% (w/v) sodium azide and 2% sucrose. <i>Note that this product is shipped as lyophilized powder to China customers.</i>
Purification:	Affinity Purified
Conjugation:	Unconjugated
Storage:	Store at -20°C as received.
Stability:	Stable for 12 months from date of receipt.
Predicted Protein Size:	71 kDa
Gene Name:	E74 like ETS transcription factor 4
Database Link:	<a href="#">NP_001412</a> <a href="#">Entrez Gene 2000 Human Q99607</a>
Background:	ELF4 contains 1 ETS DNA-binding domain and belongs to the ETS family. It is transcriptional activator that binds to DNA sequences containing the consensus 5'-WGGA-3'. It transactivates promoters of the hematopoietic growth factor genes CSF2, IL3, IL8, and of the bovine lysozyme gene. It acts synergistically with RUNX1 to transactivate the IL3 promoter and also transactivates the PRF1 promoter in natural killer (NK) cells. ELF4 plays a role in the development and function of NK and NK T-cells and in innate immunity.



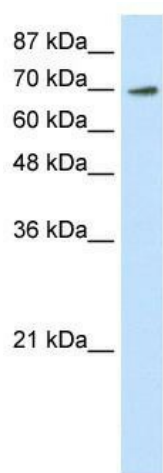
[View online »](#)

**Synonyms:** ELFR; MEF

**Note:** Immunogen Sequence Homology: Human: 100%; Dog: 93%; Pig: 93%; Rat: 93%; Horse: 93%; Mouse: 93%; Bovine: 93%; Rabbit: 93%; Guinea pig: 93%

**Protein Families:** Transcription Factors

**Product images:**



WB Suggested Anti-ELF4 Antibody Titration: 0.2-1 ug/ml; ELISA Titer: 1: 312500; Positive Control: Transfected 293T