

Product datasheet for **TA335186**

CHD2 Rabbit Polyclonal Antibody

Product data:

| | |
|-------------------------|--|
| Product Type: | Primary Antibodies |
| Applications: | WB |
| Recommended Dilution: | WB |
| Reactivity: | Human |
| Host: | Rabbit |
| Isotype: | IgG |
| Clonality: | Polyclonal |
| Immunogen: | The immunogen for anti-CHD2 antibody is: synthetic peptide directed towards the N-terminal region of Human CHD2. Synthetic peptide located within the following region: MMRNKDKSQEEDSSLHSNASSHSASEEASGSDSGSQSESEQGSDPGSGHG |
| Formulation: | Liquid. Purified antibody supplied in 1x PBS buffer with 0.09% (w/v) sodium azide and 2% sucrose. <i>Note that this product is shipped as lyophilized powder to China customers.</i> |
| Purification: | Affinity Purified |
| Conjugation: | Unconjugated |
| Storage: | Store at -20°C as received. |
| Stability: | Stable for 12 months from date of receipt. |
| Predicted Protein Size: | 57 kDa |
| Gene Name: | chromodomain helicase DNA binding protein 2 |
| Database Link: | NP_001036037 Entrez Gene 1106 Human O14647 |
| Background: | The CHD family of proteins is characterized by the presence of chromo (chromatin organization modifier) domains and SNF2-related helicase/ATPase domains. CHD genes alter gene expression possibly by modification of chromatin structure thus altering access of the transcriptional apparatus to its chromosomal DNA template. Alternatively spliced transcript variants encoding distinct isoforms have been found for this gene. |
| Synonyms: | EEOC |

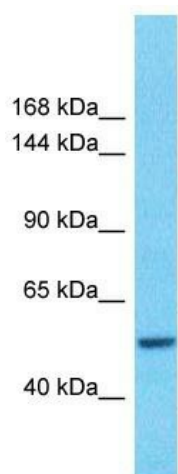


[View online »](#)

Note: Immunogen Sequence Homology: Dog: 100%; Pig: 100%; Rat: 100%; Horse: 100%; Human: 100%; Mouse: 100%; Bovine: 100%; Rabbit: 100%; Zebrafish: 90%

Protein Families: Transcription Factors

Product images:



Host: Rabbit
Target Name: CHD2
Sample Tissue: Ovary Tumor Lysate
Antibody Dilution: 1.0 μ g/ml

Host: Rabbit; Target Name: CHD2; Sample Tissue: Ovary tumor lysates; Antibody Dilution: 1.0 ug/ml