

Product datasheet for **TA335185**

BTF3 Rabbit Polyclonal Antibody

Product data:

Product Type:	Primary Antibodies
Applications:	WB
Recommended Dilution:	WB
Reactivity:	Human
Host:	Rabbit
Isotype:	IgG
Clonality:	Polyclonal
Immunogen:	The immunogen for anti-BTF3 antibody: synthetic peptide directed towards the middle region of human BTF3. Synthetic peptide located within the following region: DSLTSLRRLAEALPKQSVDGKAPLATGEDDDDEVPLVNFDEASKNEAN
Formulation:	Liquid. Purified antibody supplied in 1x PBS buffer with 0.09% (w/v) sodium azide and 2% sucrose. <i>Note that this product is shipped as lyophilized powder to China customers.</i>
Purification:	Protein A purified
Conjugation:	Unconjugated
Storage:	Store at -20°C as received.
Stability:	Stable for 12 months from date of receipt.
Predicted Protein Size:	23 kDa
Gene Name:	basic transcription factor 3
Database Link:	NP_001032726 Entrez Gene 689 Human P20290
Background:	BTF3 forms a stable complex with RNA polymerase IIB and is required for transcriptional initiation. Alternative splicing results in multiple transcript variants encoding different isoforms. This gene has multiple pseudogenes.
Synonyms:	BETA-NAC; BTF3a; BTF3b; NACB

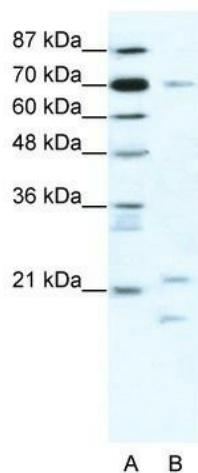


[View online »](#)

Note: Immunogen Sequence Homology: Dog: 100%; Pig: 100%; Rat: 100%; Horse: 100%; Human: 100%; Mouse: 100%; Bovine: 100%; Rabbit: 100%; Zebrafish: 100%; Guinea pig: 100%; Yeast: 92%

Protein Families: Transcription Factors

Product images:



WB Suggested Anti-BTF3 Antibody Titration: 1.25 ug/ml; ELISA Titer: 1: 312500; Positive Control: Jurkat cell lysate BTF3 is strongly supported by BioGPS gene expression data to be expressed in Human Jurkat cells