

Product datasheet for **TA335184**

PRDM1 Rabbit Polyclonal Antibody

Product data:

Product Type:	Primary Antibodies
Applications:	WB
Recommended Dilution:	WB
Reactivity:	Human
Host:	Rabbit
Isotype:	IgG
Clonality:	Polyclonal
Immunogen:	The immunogen for anti-PRDM1 antibody: synthetic peptide directed towards the N terminal of human PRDM1. Synthetic peptide located within the following region: MKMDMEDADMTLWTEAEFEKCTYIVNDHPWDSGADGGTSVQAEASLPRN
Formulation:	Liquid. Purified antibody supplied in 1x PBS buffer with 0.09% (w/v) sodium azide and 2% sucrose. <i>Note that this product is shipped as lyophilized powder to China customers.</i>
Purification:	Protein A purified
Conjugation:	Unconjugated
Storage:	Store at -20°C as received.
Stability:	Stable for 12 months from date of receipt.
Predicted Protein Size:	88 kDa
Gene Name:	PR domain 1
Database Link:	NP_001189 Entrez Gene 639 Human O75626
Background:	PRDM1 is a protein that acts as a repressor of beta-interferon gene expression. The protein binds specifically to the PRDI (positive regulatory domain I element) of the beta-IFN gene promoter. Transcription of this gene increases upon virus induction. Two alternatively spliced transcript variants that encode different isoforms have been reported.
Synonyms:	BLIMP1; PRDI-BF1

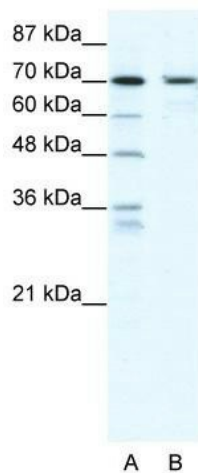


[View online »](#)

Note: Immunogen Sequence Homology: Dog: 100%; Pig: 100%; Rat: 100%; Horse: 100%; Human: 100%; Mouse: 100%; Bovine: 100%; Rabbit: 92%; Guinea pig: 83%

Protein Families: Transcription Factors

Product images:



WB Suggested Anti-PRDM1 Antibody Titration: 2.5 ug/ml; ELISA Titer: 1: 1562500; Positive Control: HepG2 cell lysate