

Product datasheet for **TA335183**

BACH1 Rabbit Polyclonal Antibody

Product data:

Product Type:	Primary Antibodies
Applications:	WB
Recommended Dilution:	WB
Reactivity:	Human
Host:	Rabbit
Isotype:	IgG
Clonality:	Polyclonal
Immunogen:	The immunogen for anti-BACH1 antibody: synthetic peptide directed towards the C terminal of human BACH1. Synthetic peptide located within the following region: PPCARGNSEPGYARGQESQQMSTATSEQAGPAEQCRQSGGISDFCQQMTD
Formulation:	Liquid. Purified antibody supplied in 1x PBS buffer with 0.09% (w/v) sodium azide and 2% sucrose. <i>Note that this product is shipped as lyophilized powder to China customers.</i>
Purification:	Protein A purified
Conjugation:	Unconjugated
Storage:	Store at -20°C as received.
Stability:	Stable for 12 months from date of receipt.
Predicted Protein Size:	82 kDa
Gene Name:	BTB domain and CNC homolog 1
Database Link:	NP_001177 Entrez Gene 571 Human O14867



[View online »](#)

Background:

BACH1 is a transcription factor that belongs to the cap'n'collar type of basic region leucine zipper factor family (CNC-bZip). The encoded protein contains broad complex, tramtrack, bric-a-brac/poxvirus and zinc finger (BTB/POZ) domains, which is atypical of CNC-bZip family members. These BTB/POZ domains facilitate protein-protein interactions and formation of homo- and/or hetero-oligomers. When this encoded protein forms a heterodimer with MafK, it functions as a repressor of Maf recognition element (MARE) and transcription is repressed. Multiple alternatively spliced transcript variants have been identified for this gene. Some exons of this gene overlap with some exons from the C21orf41 gene, which is transcribed in an opposite orientation to this gene but does not seem to encode a protein.

Synonyms:

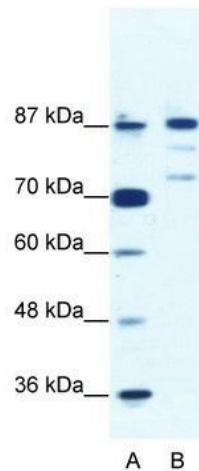
BACH-1; BTBD24

Note:

Immunogen Sequence Homology: Human: 100%

Protein Families:

Transcription Factors

Product images:

WB Suggested Anti-BACH1 Antibody Titration:
1.25 ug/ml; ELISA Titer: 1: 1562500; Positive
Control: Jurkat cell lysate