

Product datasheet for **TA335179**

Twist (TWIST1) Rabbit Polyclonal Antibody

Product data:

Product Type:	Primary Antibodies
Applications:	IHC, WB
Recommended Dilution:	WB, IHC
Reactivity:	Human
Host:	Rabbit
Isotype:	IgG
Clonality:	Polyclonal
Immunogen:	The immunogen for anti-TWIST1 antibody: synthetic peptide directed towards the C terminal of human TWIST1. Synthetic peptide located within the following region: DKLSKIQLKLAARYIDFLYQLQSDDELDSKMASCSYVAHERLSYAFSVW
Formulation:	Liquid. Purified antibody supplied in 1x PBS buffer with 0.09% (w/v) sodium azide and 2% sucrose.
Purification:	Protein A purified
Conjugation:	Unconjugated
Storage:	Store at -20°C as received.
Stability:	Stable for 12 months from date of receipt.
Predicted Protein Size:	21 kDa
Gene Name:	twist family bHLH transcription factor 1
Database Link:	NP_000465 Entrez Gene 7291 Human Q15672
Background:	Basic helix-loop-helix (bHLH) transcription factors have been implicated in cell lineage determination and differentiation. TWIST1 is a bHLH transcription factor and shares similarity with another bHLH transcription factor, Dermo1. The strongest expression of this mRNA is in placental tissue; in adults, mesodermally derived tissues express this mRNA preferentially. Mutations in this gene have been found in patients with Saethre-Chotzen syndrome.
Synonyms:	ACS3; bHLHa38; BPES2; BPES3; CRS; CRS1; CSO; SCS; TWIST

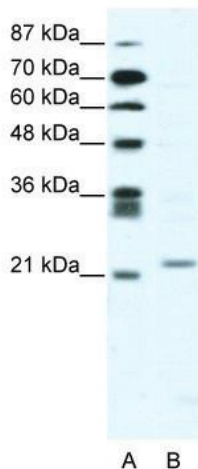


[View online »](#)

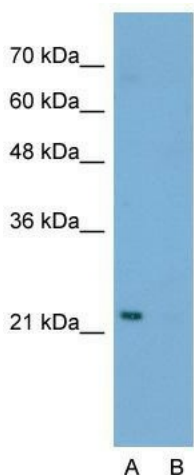
Note: Immunogen Sequence Homology: Pig: 100%; Rat: 100%; Horse: 100%; Human: 100%; Mouse: 100%; Bovine: 100%; Zebrafish: 100%; Dog: 79%; Rabbit: 79%; Guinea pig: 79%

Protein Families: Druggable Genome

Product images:



WB Suggested Anti-TWIST1 Antibody Titration: 2.5 ug/ml; ELISA Titer: 1: 1562500; Positive Control: Jurkat cell lysate



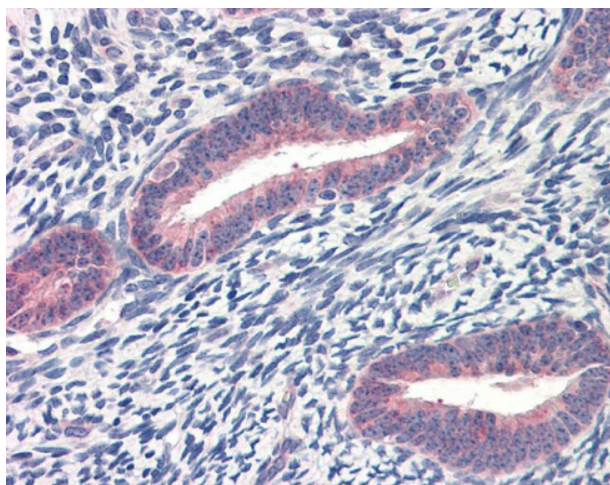
Anti-TWIST1 Western Blot & Peptide Block Validation

Lysate: Jurkat Cell

Lane A: Primary Antibody
Lane B: Primary Antibody + Blocking Peptide

Primary Antibody Concentration: 2.5µg/ml
Peptide Concentration: 2.0µg/ml
Lysate Quantity: 25µg/lane
Gel Concentration: 12%

Host: Rabbit; Target Name: TWIST1; Sample Tissue: Jurkat; Lane A: Primary Antibody; Lane B: Primary Antibody + Blocking Peptide; Primary Antibody Concentration: 2.5 ug/mL; Peptide Concentration: 2.0 ug/mL; Lysate Quantity: 25 ug/lane; Gel Concentration: 1



Uterus