

Product datasheet for **TA335174**

Wilms Tumor Protein (WT1) Rabbit Polyclonal Antibody

Product data:

Product Type:	Primary Antibodies
Applications:	IHC, WB
Recommended Dilution:	WB, IHC
Reactivity:	Mouse, Human
Host:	Rabbit
Isotype:	IgG
Clonality:	Polyclonal
Immunogen:	The immunogen for anti-WT1 antibody: synthetic peptide directed towards the middle region of human WT1. Synthetic peptide located within the following region: DHLKTHTRTHTGKPFSCRWPSCQKKFARSDELVRHHNMHQ RNMTKLQLA
Formulation:	Liquid. Purified antibody supplied in 1x PBS buffer with 0.09% (w/v) sodium azide and 2% sucrose. <i>Note that this product is shipped as lyophilized powder to China customers.</i>
Purification:	Affinity Purified
Conjugation:	Unconjugated
Storage:	Store at -20°C as received.
Stability:	Stable for 12 months from date of receipt.
Predicted Protein Size:	56 kDa
Gene Name:	Wilms tumor 1
Database Link:	NP_077742 Entrez Gene 22431 Mouse Entrez Gene 7490 Human P19544



[View online »](#)

Background:

This gene encodes a transcription factor that contains four zinc-finger motifs at the C-terminus and a proline/glutamine-rich DNA-binding domain at the N-terminus. It has an essential role in the normal development of the urogenital system, and it is mutated in a small subset of patients with Wilm's tumors. This gene exhibits complex tissue-specific and polymorphic imprinting pattern, with biallelic, and monoallelic expression from the maternal and paternal alleles in different tissues. Multiple transcript variants have been described. In several variants, there is evidence for the use of a non-AUG (CUG) translation initiation site upstream of and in-frame with the first AUG. Authors of PMID:7926762 also provide evidence that WT1 mRNA undergoes RNA editing in human and rat, and that this process is tissue-restricted and developmentally regulated. [provided by RefSeq, Oct 2010]

Synonyms:

AWT1; EWS-WT1; GUD; NPHS4; WAGR; WIT-2; WT33

Note:

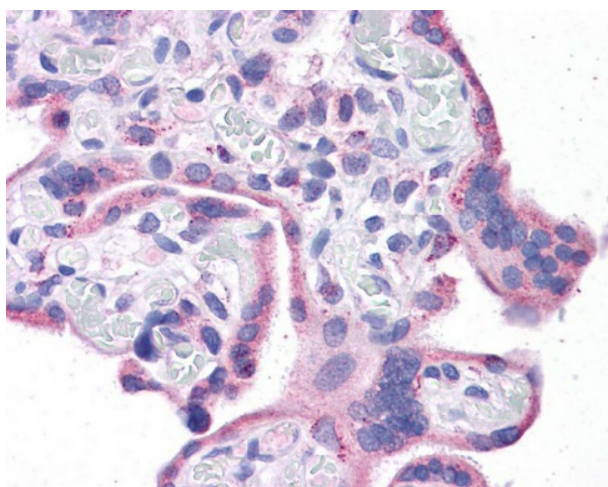
Immunogen Sequence Homology: Dog: 100%; Rat: 100%; Human: 100%; Mouse: 100%; Rabbit: 100%; Pig: 93%; Horse: 93%; Bovine: 93%; Zebrafish: 93%

Protein Families:

Druggable Genome, Transcription Factors

Product images:

WB Suggested Anti-WT1 Antibody Titration: 0.2-1 ug/ml; ELISA Titer: 1: 1562500; Positive Control: HT1080 cell lysate



Human Testis