

Product datasheet for **TA335173**

Wilms Tumor Protein (WT1) Rabbit Polyclonal Antibody

Product data:

Product Type:	Primary Antibodies
Applications:	WB
Recommended Dilution:	WB
Reactivity:	Human
Host:	Rabbit
Isotype:	IgG
Clonality:	Polyclonal
Immunogen:	The immunogen for anti-WT1 antibody: synthetic peptide directed towards the N terminal of human WT1. Synthetic peptide located within the following region: PASQHTLRSGPGCLQQPEQQGVRDPGGIWAKLGAAEASAERLQGRRSRGA
Formulation:	Liquid. Purified antibody supplied in 1x PBS buffer with 0.09% (w/v) sodium azide and 2% sucrose. <i>Note that this product is shipped as lyophilized powder to China customers.</i>
Purification:	Affinity Purified
Conjugation:	Unconjugated
Storage:	Store at -20°C as received.
Stability:	Stable for 12 months from date of receipt.
Predicted Protein Size:	54 kDa
Gene Name:	Wilms tumor 1
Database Link:	NP_000369 Entrez Gene 7490 Human P19544



[View online »](#)

Background:

WT1 is a transcription factor that contains four zinc-finger motifs at the C-terminus and a proline/glutamine-rich DNA-binding domain at the N-terminus. It has an essential role in the normal development of the urogenital system, and it is mutated in a small subset of patients with Wilm's tumors. Multiple transcript variants, resulting from alternative splicing at two coding exons, have been well characterized. There is also evidence for the use of non-AUG (CUG) translation initiation site upstream of, and in-frame with the first AUG, leading to additional isoforms.

Synonyms:

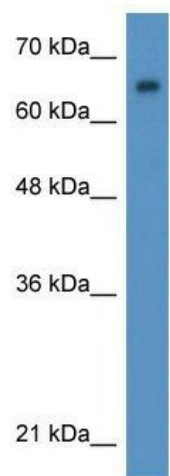
AWT1; EWS-WT1; GUD; NPHS4; WAGR; WIT-2; WT33

Note:

Immunogen Sequence Homology: Human: 100%

Protein Families:

Druggable Genome, Transcription Factors

Product images:

WB Suggested Anti-WT1 Antibody Titration: 0.2-1 ug/ml; ELISA Titer: 1: 312500; Positive Control: Hela cell lysate