

## Product datasheet for **TA335169**

### MITF Rabbit Polyclonal Antibody

#### Product data:

Product Type:	Primary Antibodies
Applications:	WB
Recommended Dilution:	WB
Reactivity:	Human, Mouse
Host:	Rabbit
Isotype:	IgG
Clonality:	Polyclonal
Immunogen:	The immunogen for anti-MITF antibody: synthetic peptide directed towards the middle region of human MITF. Synthetic peptide located within the following region: MGSKLEDILMDDTLSPVGVTDPLLSSVSPGASKTSSRRSSMSMEETEHTC
Formulation:	Liquid. Purified antibody supplied in 1x PBS buffer with 0.09% (w/v) sodium azide and 2% sucrose. <i>Note that this product is shipped as lyophilized powder to China customers.</i>
Purification:	Affinity Purified
Conjugation:	Unconjugated
Storage:	Store at -20°C as received.
Stability:	Stable for 12 months from date of receipt.
Predicted Protein Size:	47 kDa
Gene Name:	melanogenesis associated transcription factor
Database Link:	<a href="#">NP_000239</a> <a href="#">Entrez Gene 17342 Mouse</a> <a href="#">Entrez Gene 4286 Human</a> <a href="#">O75030</a>



[View online »](#)

**Background:**

MITF is a transcription factor that contains both basic helix-loop-helix and leucine zipper structural features. It regulates the differentiation and development of melanocytes retinal pigment epithelium and is also responsible for pigment cell-specific transcription of the melanogenesis enzyme genes. Heterozygous mutations in the this gene cause auditory-pigmentary syndromes, such as Waardenburg syndrome type 2 and Tietz syndrome. Alternatively spliced transcript variants encoding different isoforms have been identified. This gene encodes a transcription factor that contains both basic helix-loop-helix and leucine zipper structural features. It regulates the differentiation and development of melanocytes retinal pigment epithelium and is also responsible for pigment cell-specific transcription of the melanogenesis enzyme genes. Heterozygous mutations in the this gene cause auditory-pigmentary syndromes, such as Waardenburg syndrome type 2 and Tietz syndrome. Alternatively spliced transcript variants encoding different isoforms have been identified.

**Synonyms:**

bHLHe32; CMM8; MI; WS2; WS2A

**Note:**

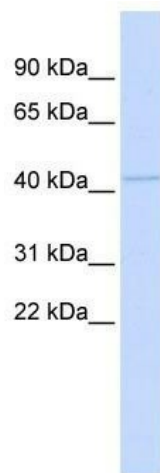
Immunogen Sequence Homology: Dog: 100%; Pig: 100%; Rat: 100%; Goat: 100%; Horse: 100%; Human: 100%; Mouse: 100%; Sheep: 100%; Bovine: 100%; Rabbit: 100%; Zebrafish: 100%; Guinea pig: 100%

**Protein Families:**

Druggable Genome, Transcription Factors

**Protein Pathways:**

Melanogenesis, Melanoma, Pathways in cancer

**Product images:**

WB Suggested Anti-MITF Antibody Titration: 0.2-1 ug/ml; Positive Control: HeLa cell lysate MITF is supported by BioGPS gene expression data to be expressed in HeLa