

## Product datasheet for **TA335166**

### **Pyrin (MEFV) Rabbit Polyclonal Antibody**

#### **Product data:**

<b>Product Type:</b>	Primary Antibodies
<b>Applications:</b>	WB
<b>Recommended Dilution:</b>	WB
<b>Reactivity:</b>	Human
<b>Host:</b>	Rabbit
<b>Isotype:</b>	IgG
<b>Clonality:</b>	Polyclonal
<b>Immunogen:</b>	The immunogen for anti-MEFV antibody: synthetic peptide directed towards the N terminal of human MEFV. Synthetic peptide located within the following region: MAKTPSDHLLSTLEELVPYDFEKFKLQNTSVQKEHSRIPRSQIQARP
<b>Formulation:</b>	Liquid. Purified antibody supplied in 1x PBS buffer with 0.09% (w/v) sodium azide and 2% sucrose. <i>Note that this product is shipped as lyophilized powder to China customers.</i>
<b>Purification:</b>	Affinity Purified
<b>Conjugation:</b>	Unconjugated
<b>Storage:</b>	Store at -20°C as received.
<b>Stability:</b>	Stable for 12 months from date of receipt.
<b>Predicted Protein Size:</b>	86 kDa
<b>Gene Name:</b>	Mediterranean fever
<b>Database Link:</b>	<a href="#">NP_000234</a> <a href="#">Entrez Gene 4210 Human</a> <a href="#">O15553</a>



[View online »](#)

**Background:** MEFV was identified as the gene that when mutated causes Mediterranean fever, a hereditary periodic fever syndrome. MEFV is expressed in granulocytes and myeloid bone marrow precursors. This gene encodes a protein, also known as pyrin or marenostin, that is an important modulator of innate immunity. Mutations in this gene are associated with Mediterranean fever, a hereditary periodic fever syndrome. Publication Note: This RefSeq record includes a subset of the publications that are available for this gene. Please see the Entrez Gene record to access additional publications.

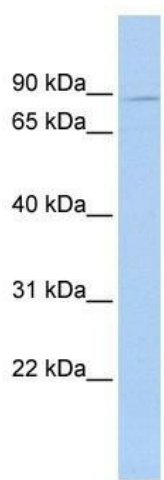
**Synonyms:** FMF; MEF; TRIM20

**Note:** Immunogen Sequence Homology: Human: 100%; Horse: 85%; Pig: 77%; Rabbit: 77%

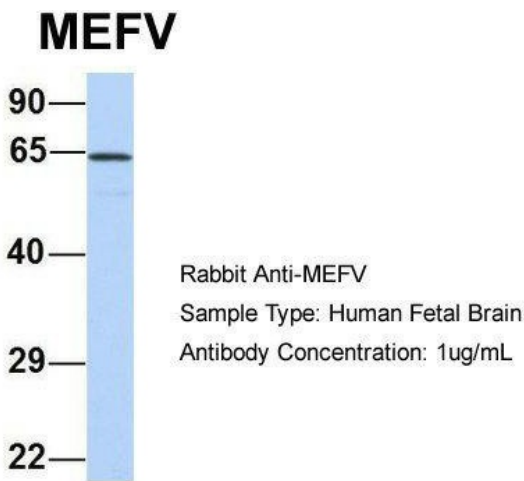
**Protein Families:** Druggable Genome

**Protein Pathways:** NOD-like receptor signaling pathway

**Product images:**



WB Suggested Anti-MEFV Antibody Titration: 0.2-1 ug/ml; ELISA Titer: 1: 1562500; Positive Control: HepG2 cell lysate



Host: Rabbit; Target Name: MEFV; Sample Tissue: Human Fetal Brain; Antibody Dilution: 1.0 ug/ml