

Product datasheet for **TA335165**

PDX1 Rabbit Polyclonal Antibody

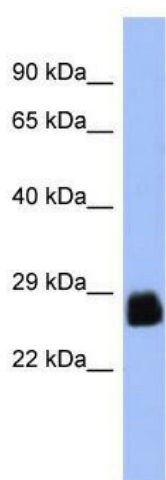
Product data:

Product Type:	Primary Antibodies
Applications:	WB
Recommended Dilution:	WB
Reactivity:	Mouse, Human
Host:	Rabbit
Isotype:	IgG
Clonality:	Polyclonal
Immunogen:	The immunogen for anti-PDX1 antibody: synthetic peptide directed towards the N terminal of human PDX1. Synthetic peptide located within the following region: MNGEEQYYAATQLYKDPCAFQRGPAPEFSASPPACLYMGRQPPPPPHPF
Formulation:	Liquid. Purified antibody supplied in 1x PBS buffer with 0.09% (w/v) sodium azide and 2% sucrose. <i>Note that this product is shipped as lyophilized powder to China customers.</i>
Purification:	Affinity Purified
Conjugation:	Unconjugated
Storage:	Store at -20°C as received.
Stability:	Stable for 12 months from date of receipt.
Predicted Protein Size:	31 kDa
Gene Name:	pancreatic and duodenal homeobox 1
Database Link:	NP_000200 Entrez Gene 18609 Mouse Entrez Gene 3651 Human P52945



[View online »](#)

Background:	The protein encoded by this gene is a transcriptional activator of several genes, including insulin, somatostatin, glucokinase, islet amyloid polypeptide, and glucose transporter type 2. The encoded nuclear protein is involved in the early development of the pancreas and plays a major role in glucose-dependent regulation of insulin gene expression. Defects in this gene are a cause of pancreatic agenesis, which can lead to early-onset insulin-dependent diabetes mellitus (NIDDM), as well as maturity onset diabetes of the young type 4 (MODY4). [provided by RefSeq, Jul 2008]
Synonyms:	GSF; IDX-1; IPF1; IUF1; MODY4; PAGEN1; PDX-1; STF-1
Note:	Immunogen Sequence Homology: Pig: 100%; Rat: 100%; Horse: 100%; Human: 100%; Mouse: 100%; Bovine: 100%; Rabbit: 100%; Dog: 92%
Protein Families:	Embryonic stem cells, ES Cell Differentiation/IPS, Induced pluripotent stem cells, Transcription Factors
Protein Pathways:	Maturity onset diabetes of the young, Type II diabetes mellitus

Product images:

WB Suggested Anti-PDX1 Antibody Titration: 0.2-1 ug/ml; ELISA Titer: 1: 312500; Positive Control: PANC1 cell lysate PDX1 is strongly supported by BioGPS gene expression data to be expressed in Human PANC1 cells