

Product datasheet for TA335164

Fibrillin 1 (FBN1) Rabbit Polyclonal Antibody

Product data:

Product Type:	Primary Antibodies
Applications:	WB
Recommended Dilution:	WB
Reactivity:	Human
Host:	Rabbit
Isotype:	IgG
Clonality:	Polyclonal
Immunogen:	The immunogen for anti-FBN1 antibody: synthetic peptide directed towards the N terminal of human FBN1. Synthetic peptide located within the following region: MRRGRLLLEIALGFTVLLASYTSHGADANLEAGNVKETRASRAKRRGGGGH
Formulation:	Liquid. Purified antibody supplied in 1x PBS buffer with 0.09% (w/v) sodium azide and 2% sucrose. <i>Note that this product is shipped as lyophilized powder to China customers.</i>
Purification:	Affinity Purified
Conjugation:	Unconjugated
Storage:	Store at -20°C as received.
Stability:	Stable for 12 months from date of receipt.
Predicted Protein Size:	21 kDa
Gene Name:	fibrillin 1
Database Link:	NP_000129 Entrez Gene 2200 Human P35555
Background:	FBN1 is a member of the fibrillin family. FBN1 is a large, extracellular matrix glycoprotein that serve as a structural component of 10-12 nm calcium-binding microfibrils. These microfibrils provide force bearing structural support in elastic and nonelastic connective tissue throughout the body. Mutations in this gene are associated with Marfan syndrome, isolated ectopia lentis, autosomal dominant Weill-Marchesani syndrome, MASS syndrome, and Shprintzen-Goldberg craniosynostosis syndrome.



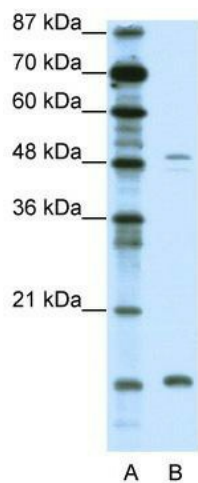
[View online »](#)

Synonyms: ACMICD; ECTOL1; FBN; GPHYSD2; MASS; MFS1; OCTD; SGS; SSKS; WMS; WMS2

Note: Immunogen Sequence Homology: Dog: 100%; Horse: 100%; Human: 100%; Rabbit: 100%; Pig: 93%; Bovine: 93%; Guinea pig: 86%; Rat: 79%; Mouse: 79%

Protein Families: Druggable Genome

Product images:



WB Suggested Anti-FBN1 Antibody Titration: 0.2-1 ug/ml; ELISA Titer: 1: 1562500; Positive Control: Jurkat cell lysate