

Product datasheet for **TA335162**

XPB (ERCC3) Rabbit Polyclonal Antibody

Product data:

Product Type:	Primary Antibodies
Applications:	WB
Recommended Dilution:	WB
Reactivity:	Human
Host:	Rabbit
Isotype:	IgG
Clonality:	Polyclonal
Immunogen:	The immunogen for anti-ERCC3 antibody: synthetic peptide directed towards the N terminal of human ERCC3. Synthetic peptide located within the following region: MGKRDRADRDKKKSRKRHYEDEEDDEEDAPGNDPQEAVPSAAGKQVDESG
Formulation:	Liquid. Purified antibody supplied in 1x PBS buffer with 0.09% (w/v) sodium azide and 2% sucrose. <i>Note that this product is shipped as lyophilized powder to China customers.</i>
Purification:	Affinity Purified
Conjugation:	Unconjugated
Storage:	Store at -20°C as received.
Stability:	Stable for 12 months from date of receipt.
Predicted Protein Size:	89 kDa
Gene Name:	ERCC excision repair 3, TFIIH core complex helicase subunit
Database Link:	NP_000113 Entrez Gene 2071 Human P19447
Background:	ERCC3 is an ATP-dependent DNA helicase that functions in nucleotide excision repair and complements xeroderma pigmentosum group B mutations. It also is the 89 kDa subunit of basal transcription factor 2 (TFIIH) and thus functions in class II transcription.
Synonyms:	BTF2; GTF2H; RAD25; TFIIH; TTD2; XPB
Note:	Immunogen Sequence Homology: Human: 100%; Pig: 93%; Yeast: 90%; Dog: 86%; Bovine: 86%; Rat: 79%; Rabbit: 79%; Zebrafish: 79%; Guinea pig: 79%

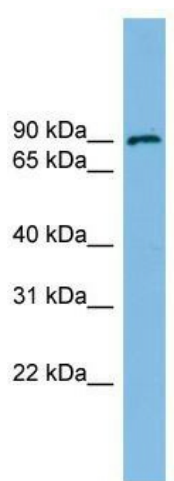


[View online »](#)

Protein Families: Druggable Genome, Transcription Factors

Protein Pathways: Nucleotide excision repair

Product images:



WB Suggested Anti-ERCC3 Antibody Titration: 0.2-1 ug/ml; ELISA Titer: 1: 312500; Positive Control: HCT15 cell lysate ERCC3 is supported by BioGPS gene expression data to be expressed in HCT15