

## Product datasheet for **TA335157**

### RPL5 Rabbit Polyclonal Antibody

#### Product data:

Product Type:	Primary Antibodies
Applications:	WB
Recommended Dilution:	WB
Reactivity:	Human, Arabidopsis thaliana
Host:	Rabbit
Isotype:	IgG
Clonality:	Polyclonal
Immunogen:	The immunogen for anti-RPL5 antibody: synthetic peptide directed towards the N terminal of human RPL5. Synthetic peptide located within the following region: RLVIQDKNKYNTPKYRMIVRVNDRDIICQIAYARIEGDMIVCAAYAHELP
Formulation:	Liquid. Purified antibody supplied in 1x PBS buffer with 0.09% (w/v) sodium azide and 2% sucrose. <i>Note that this product is shipped as lyophilized powder to China customers.</i>
Purification:	Affinity Purified
Conjugation:	Unconjugated
Storage:	Store at -20°C as received.
Stability:	Stable for 12 months from date of receipt.
Predicted Protein Size:	34 kDa
Gene Name:	ribosomal protein L5
Database Link:	<a href="#">NP_000960</a> <a href="#">Entrez Gene 6125 Human</a> <a href="#">P46777</a>



[View online »](#)

**Background:**

RPL5 is required for rRNA maturation and formation of the 60S ribosomal subunits. This protein binds 5S RNA. Ribosomes, the organelles that catalyze protein synthesis, consist of a small 40S subunit and a large 60S subunit. Together these subunits are composed of 4 RNA species and approximately 80 structurally distinct proteins. This gene encodes a ribosomal protein that is a component of the 60S subunit. The protein belongs to the L18P family of ribosomal proteins. It is located in the cytoplasm. The protein binds 5S rRNA to form a stable complex called the 5S ribonucleoprotein particle (RNP), which is necessary for the transport of nonribosome-associated cytoplasmic 5S rRNA to the nucleolus for assembly into ribosomes. The protein interacts specifically with the beta subunit of casein kinase II. Variable expression of this gene in colorectal cancers compared to adjacent normal tissues has been observed, although no correlation between the level of expression and the severity of the disease has been found. This gene is co-transcribed with the small nucleolar RNA gene U21, which is located in its fifth intron. As is typical for genes encoding ribosomal proteins, there are multiple processed pseudogenes of this gene dispersed through the genome. Publication Note: This RefSeq record includes a subset of the publications that are available for this gene. Please see the Entrez Gene record to access additional publications.

**Synonyms:**

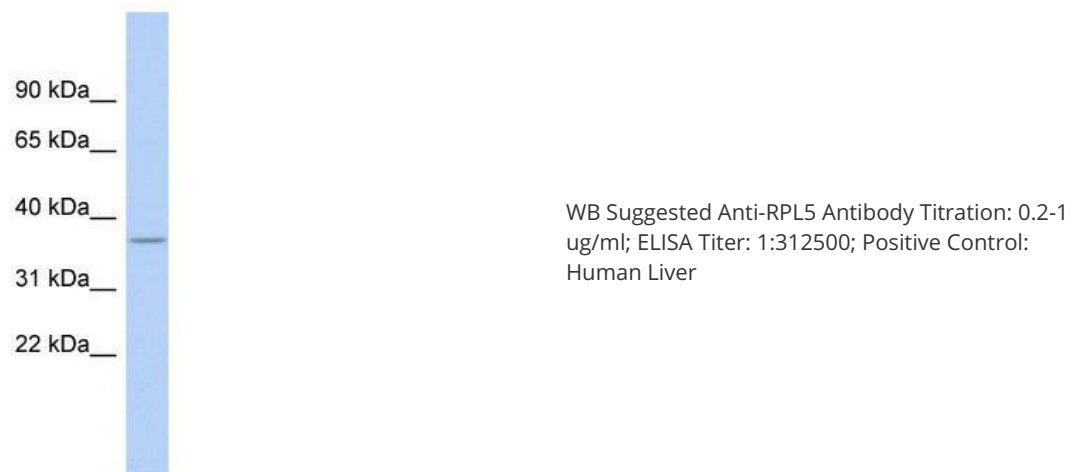
DBA6; L5; MSTP030; PPP1R135

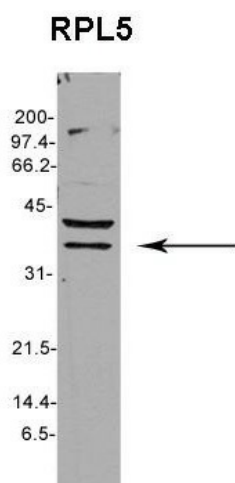
**Note:**

Immunogen Sequence Homology: Dog: 100%; Pig: 100%; Rat: 100%; Horse: 100%; Human: 100%; Mouse: 100%; Bovine: 100%; Rabbit: 100%; Zebrafish: 100%; Guinea pig: 100%

**Protein Pathways:**

Ribosome

**Product images:**



Sample Type: Arabidopsis thaliana extract (30 ug);  
Primary Diltution: 1:1000; Secondary Antibody:  
anti-rabbit HRP; Secondary Dilution: 1:15,000;  
Exposure Time: 1 minute; Image Submitted By:  
Anonymous