

Product datasheet for **TA335155**

BLVRB Rabbit Polyclonal Antibody

Product data:

Product Type:	Primary Antibodies
Applications:	WB
Recommended Dilution:	WB
Reactivity:	Human
Host:	Rabbit
Isotype:	IgG
Clonality:	Polyclonal
Immunogen:	The immunogen for anti-BLVRB antibody: synthetic peptide directed towards the middle region of human BLVRB. Synthetic peptide located within the following region: GLKYVAVMPPHIGDQPLTGAYTVTL DGRGPSRVISKHDLGHFMLRCLTTD
Formulation:	Liquid. Purified antibody supplied in 1x PBS buffer with 0.09% (w/v) sodium azide and 2% sucrose. <i>Note that this product is shipped as lyophilized powder to China customers.</i>
Purification:	Affinity Purified
Conjugation:	Unconjugated
Storage:	Store at -20°C as received.
Stability:	Stable for 12 months from date of receipt.
Predicted Protein Size:	22 kDa
Gene Name:	biliverdin reductase B
Database Link:	NP_000704 Entrez Gene 645 Human P30043
Background:	BLVRB catalyzes electron transfer from reduced pyridine nucleotides to flavins as well as methylene blue, pyrroloquinoline quinone, riboflavin, or methemoglobin. BLVRB has possible role in protecting cells from oxidative damage or in regulating iron metabolism. In the liver, BLVRB converts biliverdin to bilirubin.
Synonyms:	BVRB; FLR; HEL-S-10; SDR43U1

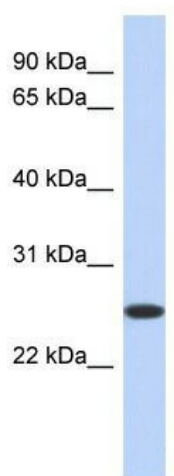


[View online »](#)

Note: Immunogen Sequence Homology: Dog: 100%; Pig: 100%; Rat: 100%; Human: 100%; Mouse: 100%; Guinea pig: 100%; Bovine: 93%; Rabbit: 92%; Horse: 86%

Protein Pathways: Porphyrin and chlorophyll metabolism

Product images:



WB Suggested Anti-BLVRB Antibody Titration: 0.2-1 ug/ml; ELISA Titer: 1:312500; Positive Control: Human Liver