

Product datasheet for **TA335152**

PDE6 alpha (PDE6A) Rabbit Polyclonal Antibody

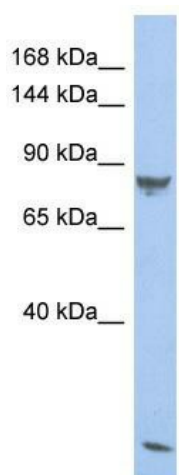
Product data:

Product Type:	Primary Antibodies
Applications:	WB
Recommended Dilution:	WB
Reactivity:	Human
Host:	Rabbit
Isotype:	IgG
Clonality:	Polyclonal
Immunogen:	The immunogen for anti-PDE6A antibody is: synthetic peptide directed towards the N-terminal region of Human PDE6A. Synthetic peptide located within the following region: YRTRNGIAELATRLFNVHKDAVLEDCLVMPDQEI VFP LDMGIVGHVAHSK
Formulation:	Liquid. Purified antibody supplied in 1x PBS buffer with 0.09% (w/v) sodium azide and 2% sucrose. <i>Note that this product is shipped as lyophilized powder to China customers.</i>
Purification:	Affinity Purified
Conjugation:	Unconjugated
Storage:	Store at -20°C as received.
Stability:	Stable for 12 months from date of receipt.
Predicted Protein Size:	85 kDa
Gene Name:	phosphodiesterase 6A
Database Link:	NP_000431 Entrez Gene 5145 Human P16499
Background:	The function of this protein remains unknown.
Synonyms:	CGPR-A; PDEA; RP43
Note:	Immunogen Sequence Homology: Dog: 100%; Rat: 100%; Horse: 100%; Human: 100%; Mouse: 100%; Bovine: 100%; Zebrafish: 100%; Rabbit: 93%; Pig: 92%; Guinea pig: 92%
Protein Families:	Druggable Genome



[View online »](#)

Product images:



Host: Rabbit; Target Name: PDE6A; Sample
Tissue: Fetal Thymus lysates; Antibody Dilution:
1.0 ug/ml