

## Product datasheet for **TA335146**

### BLMH Rabbit Polyclonal Antibody

#### Product data:

Product Type:	Primary Antibodies
Applications:	WB
Recommended Dilution:	WB
Reactivity:	Mouse
Host:	Rabbit
Isotype:	IgG
Clonality:	Polyclonal
Immunogen:	The immunogen for anti-Blmh antibody is: synthetic peptide directed towards the C-terminal region of Mouse Blmh. Synthetic peptide located within the following region: GPITPLQFYKEHVKPLFNMEDKICFVNDPRPQHKYNKLYTDYLSNMVGG
Formulation:	Liquid. Purified antibody supplied in 1x PBS buffer with 0.09% (w/v) sodium azide and 2% sucrose. <i>Note that this product is shipped as lyophilized powder to China customers.</i>
Purification:	Affinity Purified
Conjugation:	Unconjugated
Storage:	Store at -20°C as received.
Stability:	Stable for 12 months from date of receipt.
Predicted Protein Size:	50 kDa
Gene Name:	bleomycin hydrolase
Database Link:	<a href="#">NP_000377</a> <a href="#">Entrez Gene 104184 Mouse</a> <a href="#">Q13867</a>
Background:	The encoded protein is a cytoplasmic cysteine peptidase involved in inactivation of bleomycin, a glycopeptide which is a component of combination chemotherapy regimens for cancer. This encoded enzyme is highly conserved, and it contains the signature active site residues of cysteine protease papain superfamily enzymes. It is postulated that this enzyme has protective effects against bleomycin-induced pulmonary fibrosis and bleomycin tumor resistance.



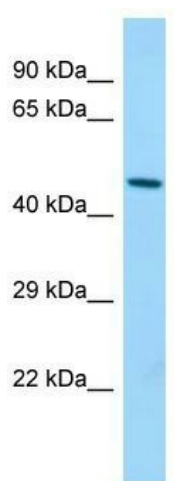
[View online »](#)

**Synonyms:** BH; BMH

**Note:** Immunogen Sequence Homology: Pig: 100%; Rat: 100%; Horse: 100%; Human: 100%; Mouse: 100%; Bovine: 100%; Guinea pig: 100%; Rabbit: 93%; Dog: 86%; Zebrafish: 79%

**Protein Families:** Druggable Genome, Protease

**Product images:**



Host: Rabbit; Target Name: Blmh; Sample Tissue: Mouse Stomach lysates; Antibody Dilution: 1.0 ug/ml