

Product datasheet for **TA335143**

Protein S (PROS1) Rabbit Polyclonal Antibody

Product data:

Product Type:	Primary Antibodies
Applications:	WB
Recommended Dilution:	WB
Reactivity:	Rat
Host:	Rabbit
Isotype:	IgG
Clonality:	Polyclonal
Immunogen:	The immunogen for anti-Pros1 antibody: synthetic peptide corresponding to a region of Rat. Synthetic peptide located within the following region: LGGVDPDISFSATPVNAFYSGCMEVNINGVQLDLDEAISKHNDIRAHSCPS
Formulation:	Liquid. Purified antibody supplied in 1x PBS buffer with 0.09% (w/v) sodium azide and 2% sucrose. <i>Note that this product is shipped as lyophilized powder to China customers.</i>
Purification:	Affinity Purified
Conjugation:	Unconjugated
Storage:	Store at -20°C as received.
Stability:	Stable for 12 months from date of receipt.
Predicted Protein Size:	74 kDa
Gene Name:	protein S (alpha)
Database Link:	NP_000304 Entrez Gene 81750 Rat P07225
Background:	Pros1 is a component of the Protein C/Protein S anticoagulant system; human homolog interacts with factor Xa, factor Va, and phospholipids to inhibit prothrombin activation.
Synonyms:	PROS; PS21; PS22; PS23; PS24; PS25; PSA; THPH5; THPH6
Note:	Immunogen Sequence Homology: Dog: 100%; Rat: 100%; Human: 100%; Mouse: 100%; Rabbit: 100%; Pig: 93%; Bovine: 93%; Guinea pig: 93%; Horse: 86%

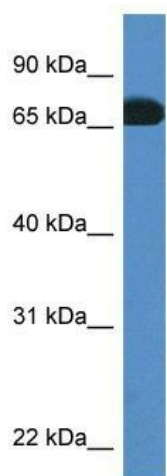


[View online »](#)

Protein Families: Druggable Genome, Secreted Protein

Protein Pathways: Complement and coagulation cascades

Product images:



WB Suggested Anti-Pros1 Antibody; Titration: 1.0 ug/ml; Positive Control: Rat Muscle