

## Product datasheet for TA335142

### Protein S (PROS1) Rabbit Polyclonal Antibody

#### Product data:

Product Type:	Primary Antibodies
Applications:	IHC, WB
Recommended Dilution:	WB, IHC
Reactivity:	Human, Mouse
Host:	Rabbit
Isotype:	IgG
Clonality:	Polyclonal
Immunogen:	The immunogen for anti-PROS1 antibody: synthetic peptide directed towards the middle region of human PROS1. Synthetic peptide located within the following region: MCAQLCVNYPGGYTCYCDGKKGFKLAQDQKSCEVSVCLPLNLDTKYELL
Formulation:	Liquid. Purified antibody supplied in 1x PBS buffer with 0.09% (w/v) sodium azide and 2% sucrose. <i>Note that this product is shipped as lyophilized powder to China customers.</i>
Purification:	Affinity Purified
Conjugation:	Unconjugated
Storage:	Store at -20°C as received.
Stability:	Stable for 12 months from date of receipt.
Predicted Protein Size:	71 kDa
Gene Name:	protein S (alpha)
Database Link:	<a href="#">NP_000304</a> <a href="#">Entrez Gene 19128 Mouse</a> <a href="#">Entrez Gene 5627 Human</a> <a href="#">P07225</a>
Background:	PROS1 is an anticoagulant plasma protein; it is a cofactor to activated protein C in the degradation of coagulation factors Va and VIIIa. It helps to prevent coagulation and stimulating fibrinolysis.
Synonyms:	PROS; PS21; PS22; PS23; PS24; PS25; PSA; THPH5; THPH6
Note:	Immunogen Sequence Homology: Horse: 100%; Human: 100%; Mouse: 100%; Bovine: 100%; Pig: 93%; Rat: 93%; Rabbit: 93%; Guinea pig: 93%; Dog: 86%

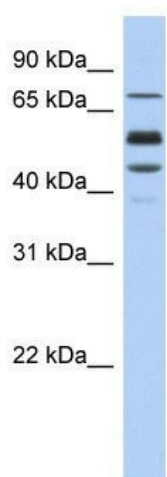


[View online »](#)

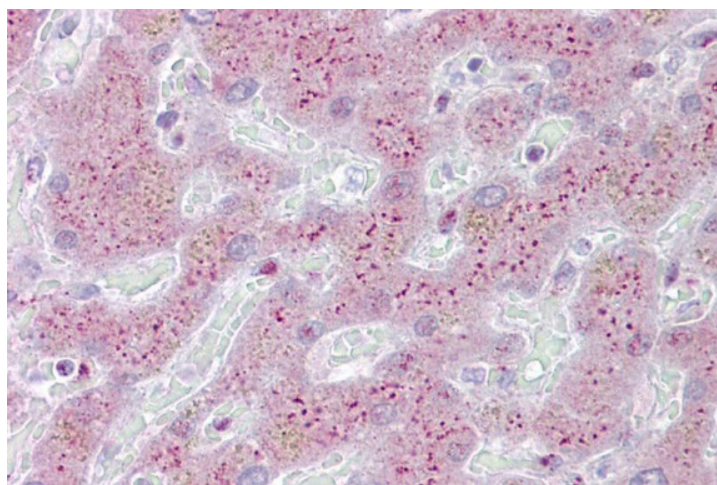
Protein Families: Druggable Genome, Secreted Protein

Protein Pathways: Complement and coagulation cascades

### Product images:



WB Suggested Anti-PROS1 Antibody Titration: 0.2-1 ug/ml; ELISA Titer: 1:312500; Positive Control: Human Muscle



Immunohistochemistry with Liver tissue at an antibody concentration of 5 ug/ml using anti-PROS1 antibody