

Product datasheet for **TA335141**

PPOX Rabbit Polyclonal Antibody

Product data:

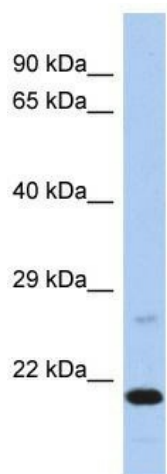
Product Type:	Primary Antibodies
Applications:	WB
Recommended Dilution:	WB
Reactivity:	Human
Host:	Rabbit
Isotype:	IgG
Clonality:	Polyclonal
Immunogen:	The immunogen for anti-PPOX antibody is: synthetic peptide directed towards the C-terminal region of Human PPOX. Synthetic peptide located within the following region: GGALHALPTGLRGLLRPSPPFKPLFWAGLRELTkPRGKEPDETVHSFAQ
Formulation:	Liquid. Purified antibody supplied in 1x PBS buffer with 0.09% (w/v) sodium azide and 2% sucrose. <i>Note that this product is shipped as lyophilized powder to China customers.</i>
Purification:	Affinity Purified
Conjugation:	Unconjugated
Storage:	Store at -20°C as received.
Stability:	Stable for 12 months from date of receipt.
Predicted Protein Size:	17 kDa
Gene Name:	protoporphyrinogen oxidase
Database Link:	NP_000300 Entrez Gene 5498 Human P50336
Background:	The function of this protein remains unknown.
Synonyms:	PPO; V290M; VP
Note:	Immunogen Sequence Homology: Pig: 100%; Rat: 100%; Human: 100%; Mouse: 100%; Bovine: 100%; Rabbit: 100%; Guinea pig: 100%; Dog: 93%; Horse: 93%
Protein Families:	Druggable Genome



[View online »](#)

Protein Pathways: Metabolic pathways, Porphyrin and chlorophyll metabolism

Product images:



Host: Rabbit; Target Name: PPOX; Sample Tissue: HepG2 Whole Cell lysates; Antibody Dilution: 1.0 ug/ml