

Product datasheet for **TA335136**

NDP Rabbit Polyclonal Antibody

Product data:

Product Type:	Primary Antibodies
Applications:	IHC, WB
Recommended Dilution:	WB, IHC
Reactivity:	Human
Host:	Rabbit
Isotype:	IgG
Clonality:	Polyclonal
Immunogen:	The immunogen for anti-NDP antibody: synthetic peptide directed towards the middle region of human NDP. Synthetic peptide located within the following region: DPRRCMRHHYVDSISHPLYKCSSKMVLLARCEGHCSQASRSEPLVSFSTV
Formulation:	Liquid. Purified antibody supplied in 1x PBS buffer with 0.09% (w/v) sodium azide and 2% sucrose. <i>Note that this product is shipped as lyophilized powder to China customers.</i>
Purification:	Affinity Purified
Conjugation:	Unconjugated
Storage:	Store at -20°C as received.
Stability:	Stable for 12 months from date of receipt.
Predicted Protein Size:	15 kDa
Gene Name:	NDP, norrin cystine knot growth factor
Database Link:	NP_000257 Entrez Gene 4693 Human Q00604
Background:	This gene encodes a secreted protein with a cystein-knot motif that activates the Wnt/beta-catenin pathway. The protein forms disulfide-linked oligomers in the extracellular matrix. Mutations in this gene result in Norrie disease and X-linked exudative vitreoretinopathy. [provided by RefSeq, Feb 2009]
Synonyms:	EVR2; FEVR; ND



[View online »](#)

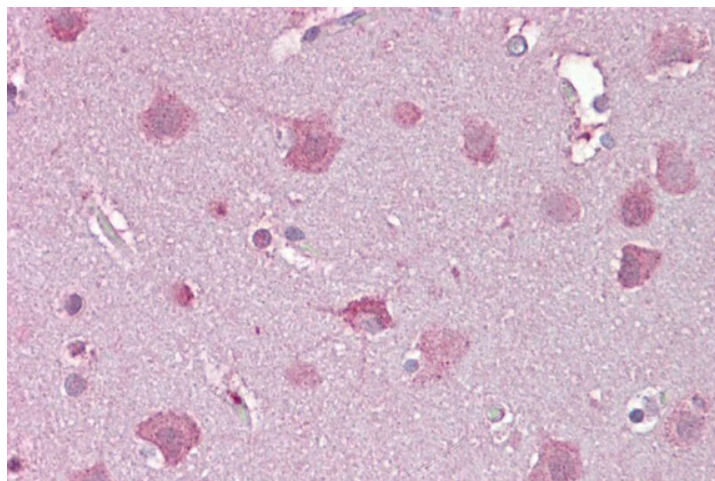
Note: Immunogen Sequence Homology: Dog: 100%; Pig: 100%; Rat: 100%; Horse: 100%; Human: 100%; Mouse: 100%; Bovine: 100%; Rabbit: 100%; Guinea pig: 100%

Protein Families: Druggable Genome, Secreted Protein

Product images:



WB Suggested Anti-NDP Antibody Titration: 0.2-1 ug/ml; ELISA Titer: 1:312500; Positive Control: Human Liver



Immunohistochemistry with Brain, cortex tissue at an antibody concentration of 5 ug/ml using anti-NDP antibody