

Product datasheet for TA335135

Methylmalonyl Coenzyme A mutase (MUT) Rabbit Polyclonal Antibody

Product data:

Product Type:	Primary Antibodies
Applications:	WB
Recommended Dilution:	WB
Reactivity:	Mouse
Host:	Rabbit
Isotype:	IgG
Clonality:	Polyclonal
Immunogen:	The immunogen for anti-Mut antibody is: synthetic peptide directed towards the N-terminal region of Mouse Mut. Synthetic peptide located within the following region: LAKKQLKGKNPEDLIWHTPEGISIKPLYSRADTLDLPEELPGVKPFTRGP
Formulation:	Liquid. Purified antibody supplied in 1x PBS buffer with 0.09% (w/v) sodium azide and 2% sucrose. <i>Note that this product is shipped as lyophilized powder to China customers.</i>
Purification:	Affinity Purified
Conjugation:	Unconjugated
Storage:	Store at -20°C as received.
Stability:	Stable for 12 months from date of receipt.
Predicted Protein Size:	82 kDa
Gene Name:	methylmalonyl-CoA mutase
Database Link:	NP_000246 Entrez Gene 17850 Mouse P22033
Background:	Mut is involved in the degradation of several amino acids, odd-chain fatty acids and cholesterol via propionyl-CoA to the tricarboxylic acid cycle.
Synonyms:	MCM
Note:	Immunogen Sequence Homology: Dog: 100%; Pig: 100%; Rat: 100%; Human: 100%; Mouse: 100%; Bovine: 100%; Rabbit: 100%; Zebrafish: 100%; Guinea pig: 100%; Horse: 93%

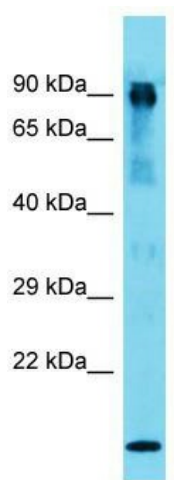


[View online »](#)

Protein Families: Druggable Genome

Protein Pathways: Metabolic pathways, Propanoate metabolism, Valine, leucine and isoleucine degradation

Product images:



Host: Rabbit; Target Name: Mut; Sample Tissue: Mouse Muscle lysates; Antibody Dilution: 1.0 ug/ml