

## Product datasheet for **TA335134**

### MLH1 Rabbit Polyclonal Antibody

#### Product data:

Product Type:	Primary Antibodies
Applications:	WB
Recommended Dilution:	WB
Reactivity:	Human, Mouse
Host:	Rabbit
Isotype:	IgG
Clonality:	Polyclonal
Immunogen:	The immunogen for anti-MLH1 antibody: synthetic peptide directed towards the N terminal of human MLH1. Synthetic peptide located within the following region: MIENCLDAKSTSIQVIVKEGGLKLIQDNGTGIRKEDLDIVCERFTTSK
Formulation:	Liquid. Purified antibody supplied in 1x PBS buffer with 0.09% (w/v) sodium azide and 2% sucrose. <i>Note that this product is shipped as lyophilized powder to China customers.</i>
Purification:	Affinity Purified
Conjugation:	Unconjugated
Storage:	Store at -20°C as received.
Stability:	Stable for 12 months from date of receipt.
Predicted Protein Size:	84 kDa
Gene Name:	mutL homolog 1
Database Link:	<a href="#">NP_000240</a> <a href="#">Entrez Gene 17350 Mouse</a> <a href="#">Entrez Gene 4292 Human</a> <a href="#">P40692</a>



[View online »](#)

**Background:**

This gene was identified as a locus frequently mutated in hereditary nonpolyposis colon cancer (HNPCC). It is a human homolog of the E. coli DNA mismatch repair gene mutL, consistent with the characteristic alterations in microsatellite sequences (RER+phenotype) found in HNPCC. This gene was identified as a locus frequently mutated in hereditary nonpolyposis colon cancer (HNPCC). It is a human homolog of the E. coli DNA mismatch repair gene mutL, consistent with the characteristic alterations in microsatellite sequences (RER+ phenotype) found in HNPCC. Alternatively spliced transcript variants encoding different isoforms have been described, but their full-length natures have not been determined. Publication Note: This RefSeq record includes a subset of the publications that are available for this gene. Please see the Entrez Gene record to access additional publications.

**Synonyms:**

COCA2; FCC2; hMLH1; HNPCC; HNPCC2

**Note:**

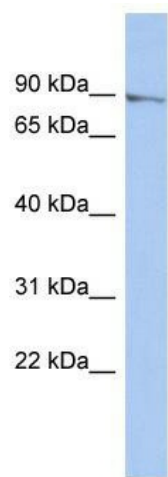
Immunogen Sequence Homology: Dog: 100%; Pig: 100%; Rat: 100%; Horse: 100%; Human: 100%; Mouse: 100%; Rabbit: 100%; Guinea pig: 100%; Bovine: 93%; Yeast: 83%; Zebrafish: 79%

**Protein Families:**

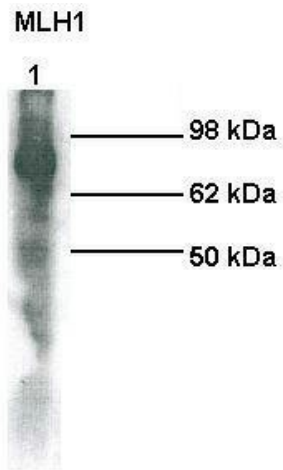
Druggable Genome

**Protein Pathways:**

Colorectal cancer, Endometrial cancer, Mismatch repair, Pathways in cancer

**Product images:**

WB Suggested Anti-MLH1 Antibody Titration: 0.2-1 ug/ml; ELISA Titer: 1:1562500; Positive Control: Human Placenta



Lanes: Lane 1: hMLH1 transfected 293 cells;  
Primary Antibody Dilution: ; 1:500; Secondary  
Antibody: ; Anti-rabbit HRP; Secondary Antibody  
Dilution: ; 1:5000; Gene Name: ; MLH1; Submitted  
by: ; Galina Petukhova, USUHS; MLH1 is  
supported by BioGPS gene expres