

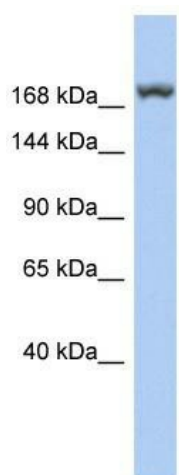
Product datasheet for TA335129

LRRC37A3 Rabbit Polyclonal Antibody

Product data:

Product Type:	Primary Antibodies
Applications:	WB
Recommended Dilution:	WB
Reactivity:	Human
Host:	Rabbit
Isotype:	IgG
Clonality:	Polyclonal
Immunogen:	The immunogen for anti-LRRC37A3 antibody: synthetic peptide directed towards the middle region of human LRRC37A3. Synthetic peptide located within the following region: NYTSTELIIEPEEPSDSSGINLSGFGSEQLDTNDESDVTSTLSYILPYFS
Formulation:	Liquid. Purified antibody supplied in 1x PBS buffer with 0.09% (w/v) sodium azide and 2% sucrose.
Purification:	Affinity Purified
Conjugation:	Unconjugated
Storage:	Store at -20°C as received.
Stability:	Stable for 12 months from date of receipt.
Predicted Protein Size:	180 kDa
Gene Name:	leucine-rich repeat containing 37 member A3
Database Link:	NP_955372 Entrez Gene 374819 Human O60309
Background:	The specific function of this protein remains unknown.
Synonyms:	LRRC37; LRRC37A
Note:	Immunogen Sequence Homology: Human: 100%; Dog: 91%; Pig: 91%; Rat: 91%; Horse: 91%; Mouse: 91%; Bovine: 91%; Guinea pig: 91%
Protein Families:	Transmembrane


[View online »](#)

Product images:

WB Suggested Anti-LRRC37A3 Antibody Titration:
0.2-1 ug/ml; ELISA Titer: 1:312500; Positive
Control: Human Lung