

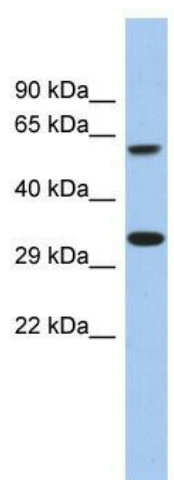
## Product datasheet for **TA335128**

### CALHM3 Rabbit Polyclonal Antibody

#### Product data:

Product Type:	Primary Antibodies
Applications:	WB
Recommended Dilution:	WB
Reactivity:	Human
Host:	Rabbit
Isotype:	IgG
Clonality:	Polyclonal
Immunogen:	The immunogen for anti-FAM26A antibody: synthetic peptide directed towards the C terminal of human FAM26A. Synthetic peptide located within the following region: RSELQARGLRGNAGRRLELPAVPEPPEGLDSGSGKAHLRAISSREQVDR
Formulation:	Liquid. Purified antibody supplied in 1x PBS buffer with 0.09% (w/v) sodium azide and 2% sucrose.
Purification:	Affinity Purified
Conjugation:	Unconjugated
Storage:	Store at -20°C as received.
Stability:	Stable for 12 months from date of receipt.
Predicted Protein Size:	38 kDa
Gene Name:	calcium homeostasis modulator 3
Database Link:	<a href="#">NP_001123214</a> <a href="#">Entrez Gene 119395 Human</a> <a href="#">Q86XJ0</a>
Background:	The specific function of the protein remains unknown.
Synonyms:	bA225H22.7; FAM26A
Note:	Immunogen Sequence Homology: Human: 100%; Bovine: 86%; Horse: 79%
Protein Families:	Transmembrane


[View online »](#)

**Product images:**

WB Suggested Anti-FAM26A Antibody Titration:  
0.2-1 ug/ml; ELISA Titer: 1:62500; Positive Control:  
Human Liver