

## Product datasheet for **TA335127**

### SPNS2 Rabbit Polyclonal Antibody

#### Product data:

|                         |  |
|-------------------------|--|
| Product Type:           | Primary Antibodies   |
| Applications:           | WB   |
| Recommended Dilution:   | WB   |
| Reactivity:             | Human  |
| Host:                   | Rabbit   |
| Isotype:                | IgG  |
| Clonality:              | Polyclonal   |
| Immunogen:              | The immunogen for anti-SPNS2 antibody: synthetic peptide directed towards the N terminal of human SPNS2. Synthetic peptide located within the following region:<br>PPGTPGTPGCAATAKGPQAQPKPASLGRGRGAAAAILSLGNVNLNYLDRY  |
| Formulation:            | Liquid. Purified antibody supplied in 1x PBS buffer with 0.09% (w/v) sodium azide and 2% sucrose.<br><i>Note that this product is shipped as lyophilized powder to China customers.</i>  |
| Purification:           | Affinity Purified  |
| Conjugation:            | Unconjugated   |
| Storage:                | Store at -20°C as received.  |
| Stability:              | Stable for 12 months from date of receipt.   |
| Predicted Protein Size: | 60 kDa   |
| Gene Name:              | sphingolipid transporter 2   |
| Database Link:          | <a href="#">NP_001118230</a><br><a href="#">Entrez Gene 124976 Human</a><br><a href="#">Q8IVW8</a>   |
| Background:             | SPNS2 is the sphingolipid transporter required for migration of myocardial precursors. SPNS2 transports sphingosine 1-phosphate (S1P), a secreted lipid mediator that plays critical roles in cardiovascular, immunological, and neural development and function. SPNS2 mediates the export of S1P from cells in the extraembryonic yolk syncytial layer (YSL), thereby regulating myocardial precursor migration. |
| Synonyms:               | spinster homolog 2; spinster homolog 2 (Drosophila)  |

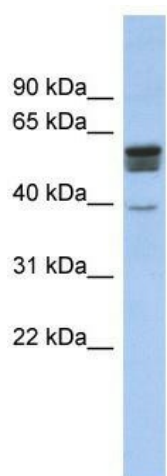


[View online »](#)

**Note:** Immunogen Sequence Homology: Pig: 100%; Human: 100%; Rat: 93%; Rabbit: 92%; Mouse: 85%

**Protein Families:** Transmembrane

**Product images:**



WB Suggested Anti-SPNS2 Antibody Titration: 0.2-1 ug/ml; ELISA Titer: 1:1562500; Positive Control: Human Muscle