

Product datasheet for **TA335126**

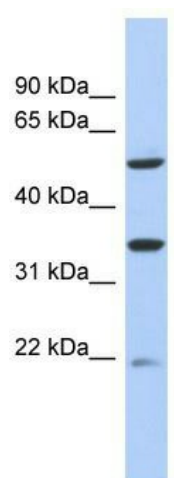
SLC22A24 Rabbit Polyclonal Antibody

Product data:

Product Type:	Primary Antibodies
Applications:	WB
Recommended Dilution:	WB
Reactivity:	Human
Host:	Rabbit
Isotype:	IgG
Clonality:	Polyclonal
Immunogen:	The immunogen for anti-MGC34821 antibody: synthetic peptide directed towards the middle region of human MGC34821. Synthetic peptide located within the following region: VFPILAVPVILLLPETRDLPNTIQDVENEKDSRNIKQEDTCMKVTQF
Formulation:	Liquid. Purified antibody supplied in 1x PBS buffer with 0.09% (w/v) sodium azide and 2% sucrose. <i>Note that this product is shipped as lyophilized powder to China customers.</i>
Purification:	Affinity Purified
Conjugation:	Unconjugated
Storage:	Store at -20°C as received.
Stability:	Stable for 12 months from date of receipt.
Predicted Protein Size:	61 kDa
Gene Name:	solute carrier family 22 member 24
Database Link:	NP_001129978 Entrez Gene 283238 Human Q8N4F4
Background:	The specific function of this protein remains unknown
Synonyms:	NET46
Note:	Immunogen Sequence Homology: Human: 100%



[View online »](#)

Product images:

WB Suggested Anti-MGC34821 Antibody Titration:
0.2-1 ug/ml; ELISA Titer: 1:312500; Positive
Control: 293T cell lysate