

## Product datasheet for TA335122

### ALOX15 Rabbit Polyclonal Antibody

#### Product data:

Product Type:	Primary Antibodies
Applications:	WB
Recommended Dilution:	WB
Reactivity:	Human
Host:	Rabbit
Isotype:	IgG
Clonality:	Polyclonal
Immunogen:	The immunogen for anti-ALOX15 antibody: synthetic peptide directed towards the middle region of human ALOX15. Synthetic peptide located within the following region: QHASVHLGQLDWYSWVPNAPCTMRLPPPTTKDATLETVMATLPNFHQASL
Formulation:	Liquid. Purified antibody supplied in 1x PBS buffer with 0.09% (w/v) sodium azide and 2% sucrose. <i>Note that this product is shipped as lyophilized powder to China customers.</i>
Purification:	Affinity Purified
Conjugation:	Unconjugated
Storage:	Store at -20°C as received.
Stability:	Stable for 12 months from date of receipt.
Predicted Protein Size:	73 kDa
Gene Name:	arachidonate 15-lipoxygenase
Database Link:	<a href="#">NP_001131</a> <a href="#">Entrez Gene 246 Human P16050</a>
Background:	ALOX15 converts arachidonic acid to 15S-hydroperoxyeicosatetraenoic acid. ALOX15 also acts on C-12 of arachidonate as well as on linoleic acid.
Synonyms:	12-LOX; 15-LOX-1; 15LOX-1
Note:	Immunogen Sequence Homology: Pig: 100%; Human: 100%; Rabbit: 100%; Dog: 93%; Bovine: 92%; Rat: 85%; Mouse: 85%

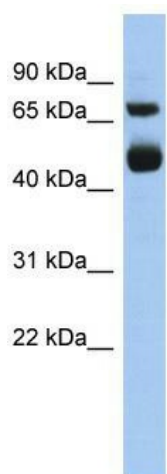


[View online »](#)

Protein Families: Druggable Genome

Protein Pathways: Arachidonic acid metabolism, Linoleic acid metabolism, Metabolic pathways

### Product images:



WB Suggested Anti-ALOX15 Antibody Titration:  
0.2-1 ug/ml; ELISA Titer: 1:312500; Positive  
Control: Human heart