

Product datasheet for **TA335121**

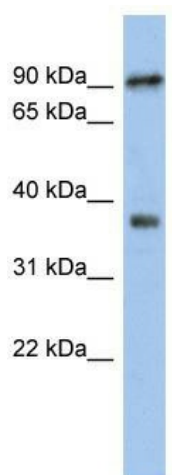
RSPH10B Rabbit Polyclonal Antibody

Product data:

Product Type:	Primary Antibodies
Applications:	WB
Recommended Dilution:	WB
Reactivity:	Human
Host:	Rabbit
Isotype:	IgG
Clonality:	Polyclonal
Immunogen:	The immunogen for anti-RSPH10B antibody: synthetic peptide directed towards the middle region of human RSPH10B. Synthetic peptide located within the following region: EFVNGYRHGRGKFYYASGAMYDGEWVSNNKHGMGRLTFKNGRVYEGAFSN
Formulation:	Liquid. Purified antibody supplied in 1x PBS buffer with 0.09% (w/v) sodium azide and 2% sucrose.
Purification:	Affinity Purified
Conjugation:	Unconjugated
Storage:	Store at -20°C as received.
Stability:	Stable for 12 months from date of receipt.
Predicted Protein Size:	96 kDa
Gene Name:	radial spoke head 10 homolog B
Database Link:	NP_775836 Entrez Gene 222967 Human P0C881
Background:	The specific function of the protein remains unknown.
Synonyms:	RSPH10B2
Note:	Immunogen Sequence Homology: Horse: 100%; Human: 100%; Dog: 93%; Pig: 93%; Bovine: 93%; Guinea pig: 93%; Rat: 91%; Mouse: 86%
Protein Families:	Druggable Genome



[View online »](#)

Product images:

WB Suggested Anti-RSPH10B Antibody Titration:
0.2-1 ug/ml; ELISA Titer: 1:1562500; Positive
Control: Jurkat cell lysate