

Product datasheet for **TA335115**

ISCU Rabbit Polyclonal Antibody

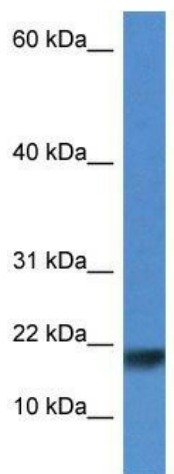
Product data:

Product Type:	Primary Antibodies
Applications:	WB
Recommended Dilution:	WB
Reactivity:	Rat
Host:	Rabbit
Isotype:	IgG
Clonality:	Polyclonal
Immunogen:	The immunogen for anti-IsCU antibody: synthetic peptide corresponding to a region of Rat. Synthetic peptide located within the following region: SALLLRSPRLPARELSAPARLYHKKVVDHYENPRNVGSLDKTSKNVGTGL
Formulation:	Liquid. Purified antibody supplied in 1x PBS buffer with 0.09% (w/v) sodium azide and 2% sucrose.
Purification:	Affinity Purified
Conjugation:	Unconjugated
Storage:	Store at -20°C as received.
Stability:	Stable for 12 months from date of receipt.
Predicted Protein Size:	18 kDa
Gene Name:	iron-sulfur cluster assembly enzyme
Database Link:	NP_998760 Entrez Gene 288740 Rat Q9H1K1
Background:	The function of this protein remains unknown.
Synonyms:	2310020H20Rik; HML; hnifU; ISU2; NIFU; NIFUN
Note:	Immunogen Sequence Homology: Dog: 100%; Pig: 100%; Rat: 100%; Goat: 100%; Horse: 100%; Human: 100%; Mouse: 100%; Bovine: 100%; Rabbit: 100%; Zebrafish: 100%; Guinea pig: 100%



[View online »](#)

Product images:



WB Suggested Anti-Iscu Antibody; Titration: 1.0 ug/ml; Positive Control: Rat Lung