

Product datasheet for **TA335114**

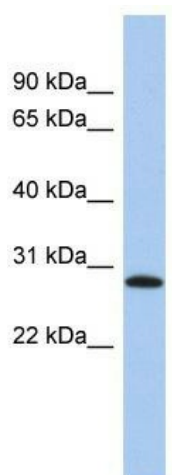
LYSMD1 Rabbit Polyclonal Antibody

Product data:

Product Type:	Primary Antibodies
Applications:	WB
Recommended Dilution:	WB
Reactivity:	Human
Host:	Rabbit
Isotype:	IgG
Clonality:	Polyclonal
Immunogen:	The immunogen for anti-LYSMD1 antibody: synthetic peptide directed towards the N terminal of human LYSMD1. Synthetic peptide located within the following region: VRERRLEHQLEPGDTLAGLALKYGVTMEQIKRANRLYTNDISFLKKTLYI
Formulation:	Liquid. Purified antibody supplied in 1x PBS buffer with 0.09% (w/v) sodium azide and 2% sucrose. <i>Note that this product is shipped as lyophilized powder to China customers.</i>
Purification:	Affinity Purified
Conjugation:	Unconjugated
Storage:	Store at -20°C as received.
Stability:	Stable for 12 months from date of receipt.
Predicted Protein Size:	25 kDa
Gene Name:	LysM domain containing 1
Database Link:	NP_997716 Entrez Gene 388695 Human Q96S90
Background:	The specific function of this protein remains unknown.
Synonyms:	SB145
Note:	Immunogen Sequence Homology: Rat: 100%; Human: 100%; Mouse: 100%; Rabbit: 100%; Dog: 93%; Pig: 93%; Horse: 93%; Bovine: 93%; Guinea pig: 86%



[View online »](#)

Product images:

WB Suggested Anti-LYSMD1 Antibody Titration:
0.2-1 ug/ml; ELISA Titer: 1:312500; Positive
Control: PANC1 cell lysate