

Product datasheet for **TA335113**

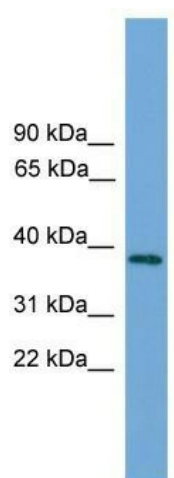
C22orf36 (LRRC75B) Rabbit Polyclonal Antibody

Product data:

Product Type:	Primary Antibodies
Applications:	WB
Recommended Dilution:	WB
Reactivity:	Human
Host:	Rabbit
Isotype:	IgG
Clonality:	Polyclonal
Immunogen:	The immunogen for anti-C22orf36 antibody: synthetic peptide directed towards the middle region of human C22orf36. Synthetic peptide located within the following region: WKSSDKICRQLIYHLTPHSKQQQGSSLRQRKTQSKLSSLQKTLLAGETV
Formulation:	Liquid. Purified antibody supplied in 1x PBS buffer with 0.09% (w/v) sodium azide and 2% sucrose. <i>Note that this product is shipped as lyophilized powder to China customers.</i>
Purification:	Affinity Purified
Conjugation:	Unconjugated
Storage:	Store at -20°C as received.
Stability:	Stable for 12 months from date of receipt.
Predicted Protein Size:	35 kDa
Gene Name:	leucine rich repeat containing 75B
Database Link:	NP_997527 Entrez Gene 388886 Human Q2VPI9
Background:	The function of C22orf36 remains unknown.
Synonyms:	C22orf36; FAM211B
Note:	Immunogen Sequence Homology: Rat: 100%; Human: 100%



[View online »](#)

Product images:

WB Suggested Anti-C22orf36 Antibody Titration:
0.2-1 ug/ml; ELISA Titer: 1:312500; Positive
Control: 721_B cell lysateFAM211B is supported
by BioGPS gene expression data to be expressed
in 721_B