

## Product datasheet for **TA335111**

### FAM190A (CCSER1) Rabbit Polyclonal Antibody

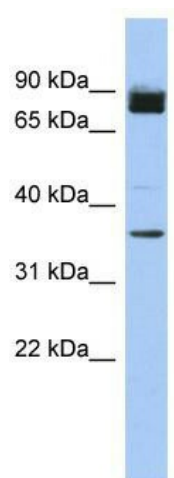
#### Product data:

Product Type:	Primary Antibodies
Applications:	WB
Recommended Dilution:	WB
Reactivity:	Human
Host:	Rabbit
Isotype:	IgG
Clonality:	Polyclonal
Immunogen:	The immunogen for anti-MGC48628 antibody: synthetic peptide directed towards the N terminal of human MGC48628. Synthetic peptide located within the following region: HHKKGSEPKQEPTNQNLISNGAQPGHSNMQKLSLEEHKTRGRHSVGF
Formulation:	Liquid. Purified antibody supplied in 1x PBS buffer with 0.09% (w/v) sodium azide and 2% sucrose. <i>Note that this product is shipped as lyophilized powder to China customers.</i>
Purification:	Affinity Purified
Conjugation:	Unconjugated
Storage:	Store at -20°C as received.
Stability:	Stable for 12 months from date of receipt.
Predicted Protein Size:	74 kDa
Gene Name:	coiled-coil serine rich protein 1
Database Link:	<a href="#">NP_997374</a> <a href="#">Entrez Gene 401145 Human</a> <a href="#">Q9C0I3</a>
Background:	The specific function of the protein remains unknown.
Synonyms:	FAM190A
Note:	Immunogen Sequence Homology: Horse: 100%; Human: 100%; Bovine: 100%; Pig: 93%; Guinea pig: 93%; Rabbit: 92%; Rat: 86%; Mouse: 86%; Dog: 79%



[View online »](#)

## Product images:



WB Suggested Anti-MGC48628 Antibody Titration:  
0.2-1 ug/ml; ELISA Titer: 1:1562500; Positive  
Control: Human heart