

Product datasheet for **TA335106**

ANKRD13D Rabbit Polyclonal Antibody

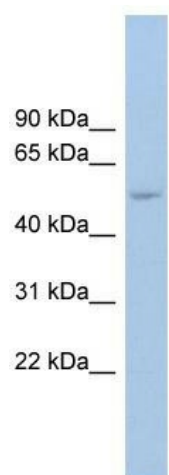
Product data:

Product Type:	Primary Antibodies
Applications:	WB
Recommended Dilution:	WB
Reactivity:	Human
Host:	Rabbit
Isotype:	IgG
Clonality:	Polyclonal
Immunogen:	The immunogen for anti-ANKRD13D antibody: synthetic peptide directed towards the middle region of human ANKRD13D. Synthetic peptide located within the following region: ARPPPQATVYEEQLQLERALQESLQLSTEPGRGPGSPRTPPAPGPPSFEE
Formulation:	Liquid. Purified antibody supplied in 1x PBS buffer with 0.09% (w/v) sodium azide and 2% sucrose. <i>Note that this product is shipped as lyophilized powder to China customers.</i>
Purification:	Affinity Purified
Conjugation:	Unconjugated
Storage:	Store at -20°C as received.
Stability:	Stable for 12 months from date of receipt.
Predicted Protein Size:	58 kDa
Gene Name:	ankyrin repeat domain 13 family member D
Database Link:	NP_997237 Entrez Gene 338692 Human Q6ZTN6
Background:	The function of this protein remains unknown.
Synonyms:	MGC50828
Note:	Immunogen Sequence Homology: Human: 100%; Rat: 90%; Mouse: 90%; Rabbit: 86%; Bovine: 79%



[View online »](#)

Product images:



WB Suggested Anti-ANKRD13D Antibody
Titration: 0.2-1 ug/ml; Positive Control: HT1080
cell lysate