

## Product datasheet for **TA335105**

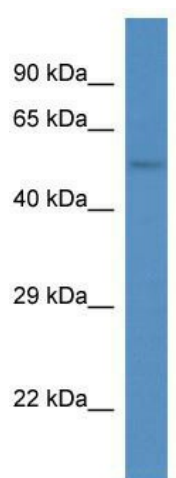
### **ANKRD13D Rabbit Polyclonal Antibody**

#### **Product data:**

<b>Product Type:</b>	Primary Antibodies
<b>Applications:</b>	WB
<b>Recommended Dilution:</b>	WB
<b>Reactivity:</b>	Mouse
<b>Host:</b>	Rabbit
<b>Isotype:</b>	IgG
<b>Clonality:</b>	Polyclonal
<b>Immunogen:</b>	The immunogen for anti-Ankrd13d antibody: synthetic peptide corresponding to a region of Mouse. Synthetic peptide located within the following region: RTEHLSDQDKLRNKGKTPFQSFLGMAQQHSSHTLAPVQQAASPTNPTAI
<b>Formulation:</b>	Liquid. Purified antibody supplied in 1x PBS buffer with 0.09% (w/v) sodium azide and 2% sucrose. <i>Note that this product is shipped as lyophilized powder to China customers.</i>
<b>Purification:</b>	Affinity Purified
<b>Conjugation:</b>	Unconjugated
<b>Storage:</b>	Store at -20°C as received.
<b>Stability:</b>	Stable for 12 months from date of receipt.
<b>Predicted Protein Size:</b>	57 kDa
<b>Gene Name:</b>	ankyrin repeat domain 13 family member D
<b>Database Link:</b>	<a href="#">NP_997237</a> <a href="#">Entrez Gene 338692 Human</a> <a href="#">Q6ZTN6</a>
<b>Background:</b>	The function remains unknown.
<b>Synonyms:</b>	MGC50828
<b>Note:</b>	Immunogen Sequence Homology: Pig: 100%; Rat: 100%; Horse: 100%; Human: 100%; Zebrafish: 100%; Guinea pig: 100%; Dog: 93%; Bovine: 92%; Mouse: 86%



[View online »](#)

**Product images:**

WB Suggested Anti-Ankrd13d Antibody; Titration:  
1.0 ug/ml; Positive Control: Mouse liver