

## Product datasheet for **TA335104**

### CYP4V2 Rabbit Polyclonal Antibody

#### Product data:

Product Type:	Primary Antibodies
Applications:	WB
Recommended Dilution:	WB
Reactivity:	Human
Host:	Rabbit
Isotype:	IgG
Clonality:	Polyclonal
Immunogen:	The immunogen for anti-CYP4V2 antibody: synthetic peptide directed towards the middle region of human CYP4V2. Synthetic peptide located within the following region: RYFPNPEEFQPERFFPENAQGRHPYAYVPFSAGPRNCIGQKFAVMEEKTI
Formulation:	Liquid. Purified antibody supplied in 1x PBS buffer with 0.09% (w/v) sodium azide and 2% sucrose.
Purification:	Affinity Purified
Conjugation:	Unconjugated
Storage:	Store at -20°C as received.
Stability:	Stable for 12 months from date of receipt.
Predicted Protein Size:	61 kDa
Gene Name:	cytochrome P450 family 4 subfamily V member 2
Database Link:	<a href="#">NP_997235</a> <a href="#">Entrez Gene 285440 Human</a> <a href="#">Q6ZWL3</a>
Background:	CYP4V2 may have a role in fatty acid and steroid metabolism. This gene encodes a member of the cytochrome P450 hemethiolate protein superfamily which are involved in oxidizing various substrates in the metabolic pathway. It is implicated in the metabolism of fatty acid precursors into n-3 polyunsaturated fatty acids. Mutations in this gene result in Bietti crystalline corneoretinal dystrophy. Publication Note: This RefSeq record includes a subset of the publications that are available for this gene. Please see the Entrez Gene record to access additional publications.



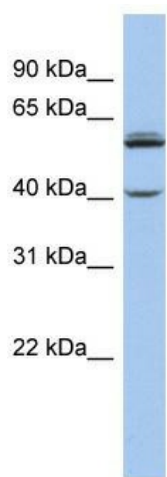
[View online »](#)

**Synonyms:** BCD; CYP4AH1

**Note:** Immunogen Sequence Homology: Rat: 100%; Human: 100%; Rabbit: 100%; Dog: 93%; Pig: 93%; Guinea pig: 93%; Horse: 92%; Mouse: 92%; Bovine: 85%; Zebrafish: 79%

**Protein Families:** Druggable Genome, P450, Transmembrane

**Product images:**



WB Suggested Anti-CYP4V2 Antibody Titration:  
0.2-1 ug/ml; ELISA Titer: 1:312500; Positive  
Control: Jurkat cell lysate